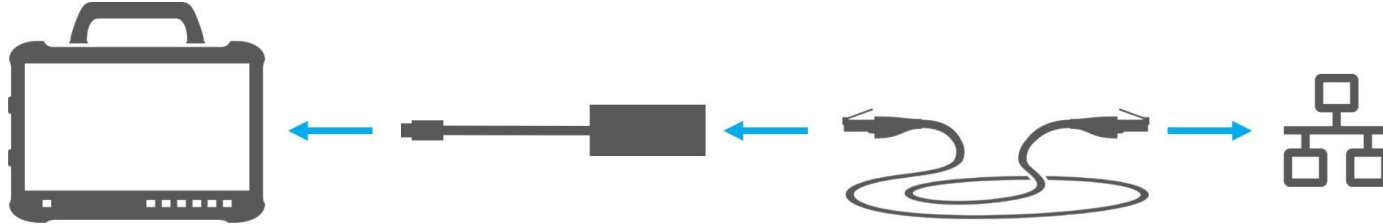


# USB to LAN Adapter HelpCard

## 1. Unpacking and Connecting

Take the USB to LAN adapter out of the packaging.



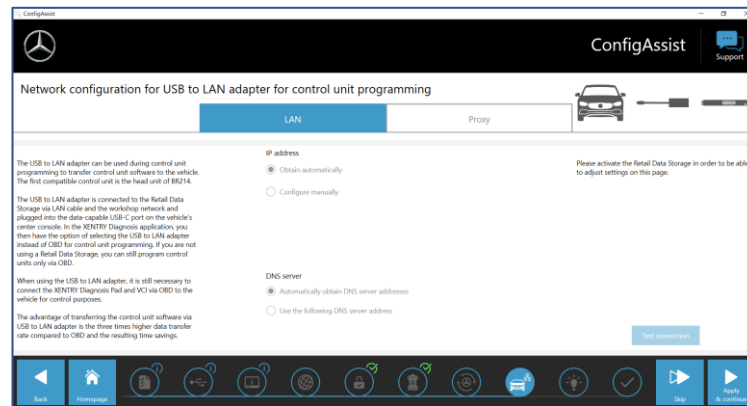
1. Connect the LAN cable to the LAN port of the diagnostics workstation. The LAN port must allow a connection to the Retail Data Storage.
2. Insert the other end of the LAN cable into the LAN port of the USB to LAN adapter.
3. Connect the USB-C part of the adapter to the Diagnosis Pad (make sure to remove the cover beforehand).

## 2. Setup (once) and Self-test in the ConfigAssist

- Open the ConfigAssist and in the navigation bar at the bottom click on the vehicle symbol to open the network configuration for the vehicle.
- Enter the appropriate settings once and afterwards test the connectivity between Pad and Retail Data Storage via the USB to LAN adapter.
- The self-test can take up to 30 seconds.
- If the connection is shown as successful, the USB to LAN adapter can be used on the vehicle.

The Retail Data Storage and the USB to LAN adapter should preferably be in the same subnet (class-C subnet). When using different subnets, there can be limitations to the usage of the USB to LAN adapter with older Headunit software versions. Please take note of the hints in XENTRY Diagnosis then.

**For further information check the user guide.**



## 3. Usage with the Vehicle

1. As usual connect your diagnostic device to the vehicle via VCI and start the ECU programming with XENTRY Diagnostics.
2. During the programming process the programming with USB to LAN adapter is recommended (if this can be done faster than via OBD).
3. Connect the LAN cable to the LAN port at the diagnostics workstation. The LAN port must allow a connection to the RDS.
4. Insert the other end of the LAN cable into the USB to LAN adapter.
5. Plug the adapter's USB-C port into the vehicle's data-enabled USB-C port (located in the center console). When a connection is established, the link LED of the USB to LAN adapter will turn green.

**i** For the time being the USB to LAN adapter can only be used with the head unit of model series BR214 and BR236. Additional model series will follow.

