



# **PicoDiagnostics<sup>®</sup>**

Automotive diagnostics software

## User's Guide



# Table of Contents

1 Welcome .....	5
2 Introduction .....	6
1 Legal statement .....	7
2 Upgrades .....	7
3 Trademarks .....	7
4 How to use this manual .....	7
5 System requirements .....	8
6 Using PicoDiagnostics for the first time .....	9
3 Menus .....	10
1 File menu .....	10
1 Preferences dialog .....	11
2 View menu .....	11
1 Details dialog .....	12
3 Tests menu .....	12
4 Options menu .....	12
5 Help menu .....	13
4 Tests .....	14
1 Cylinder Balance .....	14
1 Test conditions .....	14
2 Options .....	14
3 Running the test .....	14
4 Controls .....	15
5 Signal graph .....	17
6 Failed test .....	18
2 Compression Test .....	19
1 Test conditions .....	19
2 Connecting the PicoScope .....	20
3 Test setup .....	20
4 Options .....	21
5 Running the test .....	22
6 Failed test .....	23
3 Battery Test .....	24
1 Connections .....	25
2 Setup .....	26
3 Options .....	27
4 Running the test .....	28
5 Interpreting the results .....	29
4 Propshaft Balancing .....	31
1 Preparing the vehicle .....	31

---

2 Running PicoDiagnostics .....	31
5 NVH .....	35
1 Setup tab .....	35
2 Vehicle information .....	39
3 Record and analyze page .....	42
4 Viewing the results .....	42
5 Options .....	52
6 Advanced options .....	53
7 Load audio dialog .....	55
8 Function generator .....	56
Index .....	59



# 1 Welcome

Welcome to **PicoDiagnostics**, the automotive fault finding software for your PicoScope oscilloscope.

With a PicoScope, PicoDiagnostics turns your PC into an automotive diagnostics tool. The program includes a range of built-in tests that are easy to operate, even if you haven't used them before.

If you need to go beyond the built-in tests, an additional program is available: [PicoScope Automotive](#). This software will have been downloaded and installed along with PicoDiagnostics. This gives you all the features of an advanced oscilloscope and can be used to diagnose almost any electrical component in any vehicle.



## 2 Introduction

**PicoDiagnostics** supports the PicoScope 3000 Automotive and 4000 Automotive Series diagnostic oscilloscopes.

- Contact information
- [How to use this manual](#)

### **How to use PicoDiagnostics**

- Getting started: see [Using PicoDiagnostics for the first time.](#)
- For further information: see descriptions of [Menus.](#)

## 2.1 Legal statement

**Grant of license.** The material contained in this release is licensed, not sold. Pico Technology Limited ('Pico') grants a license to the person who installs this software, subject to the conditions listed below.

**Access.** The licensee agrees to allow access to this software only to persons who have been informed of and agree to abide by these conditions.

**Usage.** The software in this release is for use only with Pico products or with data collected using Pico products.

**Copyright.** Pico claims the copyright of, and retains the rights to, all material (software, documents etc.) contained in this release.

**Liability.** Pico and its agents shall not be liable for any loss or damage, howsoever caused, related to the use of Pico Technology equipment or software, unless excluded by statute.

**Fitness for purpose.** No two applications are the same, so Pico cannot guarantee that its equipment or software is suitable for a given application. It is therefore the user's responsibility to make sure the product is suitable for the user's application.

**Mission-critical applications.** Because the software runs on a computer that may be running other software products, and may be subject to interference from these other products, this license specifically excludes usage in 'mission-critical' applications, for example life-support systems.

**Viruses.** This software was continuously monitored for viruses during production. However, the user is responsible for virus checking the software once it is installed.

**Support.** No software is ever error-free, but if you are dissatisfied with the performance of this software, please contact our [technical support](#) staff.

## 2.2 Upgrades

We provide upgrades, free of charge, from our website at [www.picoauto.com](http://www.picoauto.com). We reserve the right to charge for updates or replacements sent out on physical media.

## 2.3 Trademarks

*Windows* is a registered trademark of Microsoft Corporation. *Pico Technology*, *PicoScope* and *PicoDiagnostics* are internationally registered trademarks.

## 2.4 How to use this manual

This manual is divided into topics. For example, the topic you are now reading is called "How to use this manual". Notice the tabs on the left labeled **Contents**, **Index** and **Search**. If you click the **Contents** tab, you will see a table of contents listing all the topics in the manual. Double-click any one of these topics to read it. Use the **Index** and **Search** tabs if you want to look up a particular word or phrase.

Also, look out for the **Forward** and **Back** buttons. These allow you to retrace your steps in the trail of topics that you have read since opening the manual.

While you are using PicoDiagnostics, you will often see **Help** buttons. Clicking these will take you to the relevant topic in this manual.

For your first introduction to PicoDiagnostics, we suggest that you start with the topic '[Using PicoDiagnostics for the first time](#)'.

## 2.5 System requirements

PicoDiagnostics runs on Microsoft Windows. For supported versions, see the installation notes on [picoauto.com/downloads](http://picoauto.com/downloads).

## 2.6 Using PicoDiagnostics for the first time

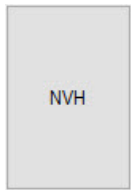
We have designed PicoDiagnostics to be as easy as possible to use, even for newcomers to automotive diagnostics. Once you have followed the introductory steps listed below, we hope you soon feel like an expert.



1. Connect your PicoScope oscilloscope to a USB port on your computer. Windows will recognize it and make the necessary changes to allow your computer to work with it. Wait until Windows tells you that the device is ready to use.



2. Click the new PicoDiagnostics icon on your Windows desktop.



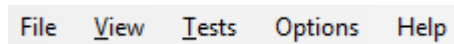
3. Click the button for the test you wish to perform.



4. Follow the on-screen Setup Wizards or instructions on connecting your scope and running the test.

## 3 Menus

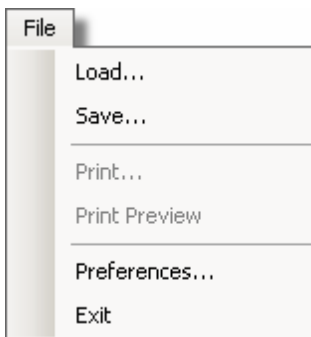
**Menus** are the quickest way to get to the main features in PicoDiagnostics. The **Menu bar** is always present at the top of the PicoDiagnostics main window, just below the window's title bar. You can click any of the menu items, or press the **Alt** key and then navigate to the menu using the cursor keys, or press the **Alt** key followed by the underlined letter in one of the menu items.



The list of items in the menu bar may vary depending on which test you are running.

### 3.1 File menu

Click **File** on the [Menu bar](#).



**Load.** Allows you to load a test from disk to review the result. Loading a test result from disk will clear any captured data and results.

**Save.** Some tests allow you to save test data to disk.

**Print.** Opens a standard Windows print dialog, which allows you to choose a printer, set printing options and then print the selected view.

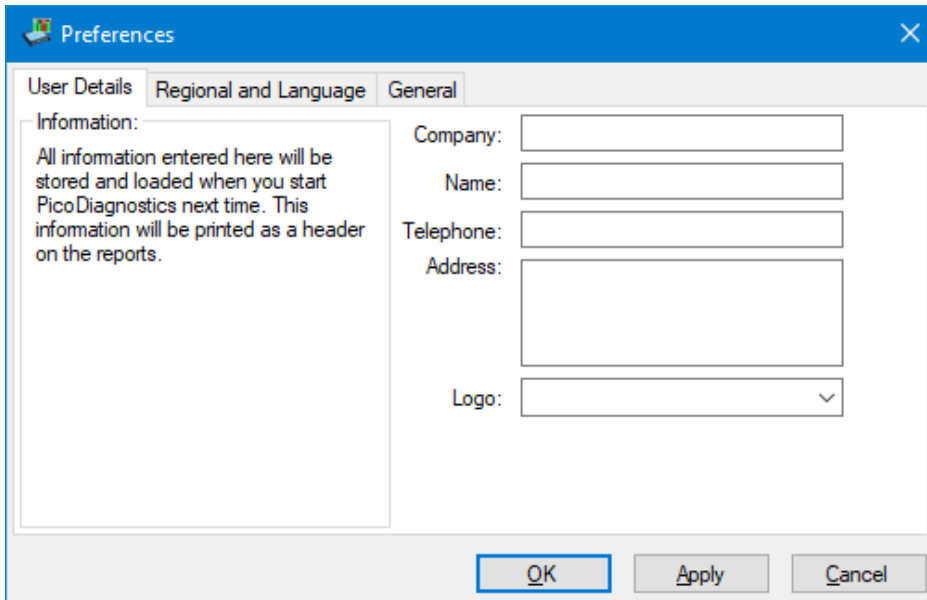
**Print Preview.** Opens the **Print Preview** window, which allows you to preview the report before printing it with the **Print** command.

**Preferences.** Opens up the [User Details](#) dialog.

**Exit.** Close PicoDiagnostics without saving any data.

### 3.1.1 Preferences dialog

This dialog appears when you select **Preferences** on the [File menu](#). In this dialog, you can enter details about your company, including your logo in the **User Details** tab. This information will be included and displayed in the report you print for your records and to provide to your customer. You can also set your preferred measurement units and language in the **Regional and Language** and **Language** tab.



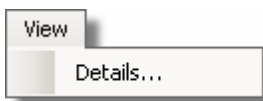
Enter all the values you want.

Click **OK** to close the dialog and save the changes.

Click **Cancel** to close the dialog and discard the changes.

## 3.2 View menu

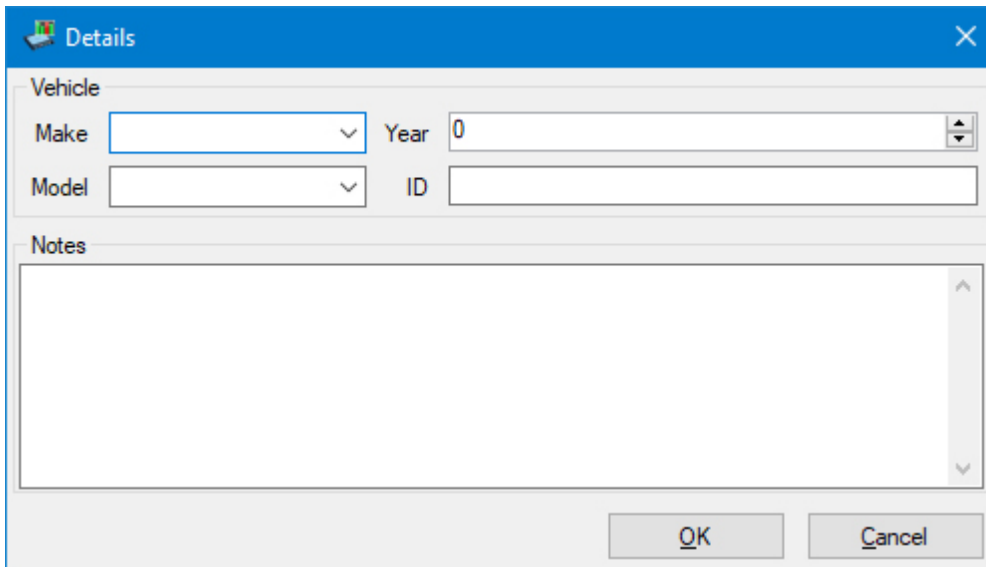
Click **View** on the [Menu bar](#).



**Details.** Edit the [vehicle details and notes](#).

### 3.2.1 Details dialog

This dialog appears when you select **Details** on the [View menu](#). It allows you to enter details about the vehicle you are testing. There is also a space for entering **Notes** about the test.



### 3.3 Tests menu

Enter topic text here. Click **Tests** on the [Menu bar](#).

This menu lists all the tests available. Click one of the tests to proceed.

### 3.4 Options menu

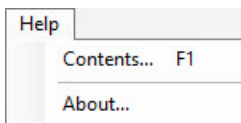
The **Options** menu changes depending upon which test you are carrying out at the time. Please see below for links to the test options you require:

- [Cylinder balance options](#)
- [Compression test options](#)
- [Battery test options](#)
- [Propshaft balancing options](#)



## 3.5 Help menu

Click **Help** on the [Menu bar](#).



These are the standard Windows options for access to the help file for the relevant test.

Note: The **NVH** test has an additional help file, which you can access by clicking Help > **NVH Diagnostic Help... F1** within the **NVH** test.

## 4 Tests

PicoDiagnostics is a collection of specific automotive tests. They are all designed to be easy to use, even if you have little or no experience of automotive diagnostics.

These tests are available with this installation of PicoDiagnostics:

- [Cylinder Balance](#)
- [Compression Test](#)
- [Battery Test](#)
- [Propshaft Balancing](#)

### 4.1 Cylinder Balance

The **Cylinder Balance** test measures how much each cylinder contributes to the engine's total power output. There are a number of things that can cause a cylinder to contribute less than the other cylinders. These include but are not limited to:

- low compression
- faulty injector
- faulty spark plug.

A slightly uneven balance does not necessarily mean that there is a fault in the engine. During warm-up, most engines run slightly unevenly. Deposits and engine wear may also have an effect on the engine's performance.

To use the **Cylinder Balance** test, start PicoDiagnostics and set the test conditions.

#### 4.1.1 Test conditions

The following test conditions must be met before running the test:

- The engine must be at normal operating temperature. You can confirm this by waiting until the cooling fan has been activated twice, and referencing the temperature gauge on the dashboard.
- The engine must be switched off before you connect the oscilloscope.

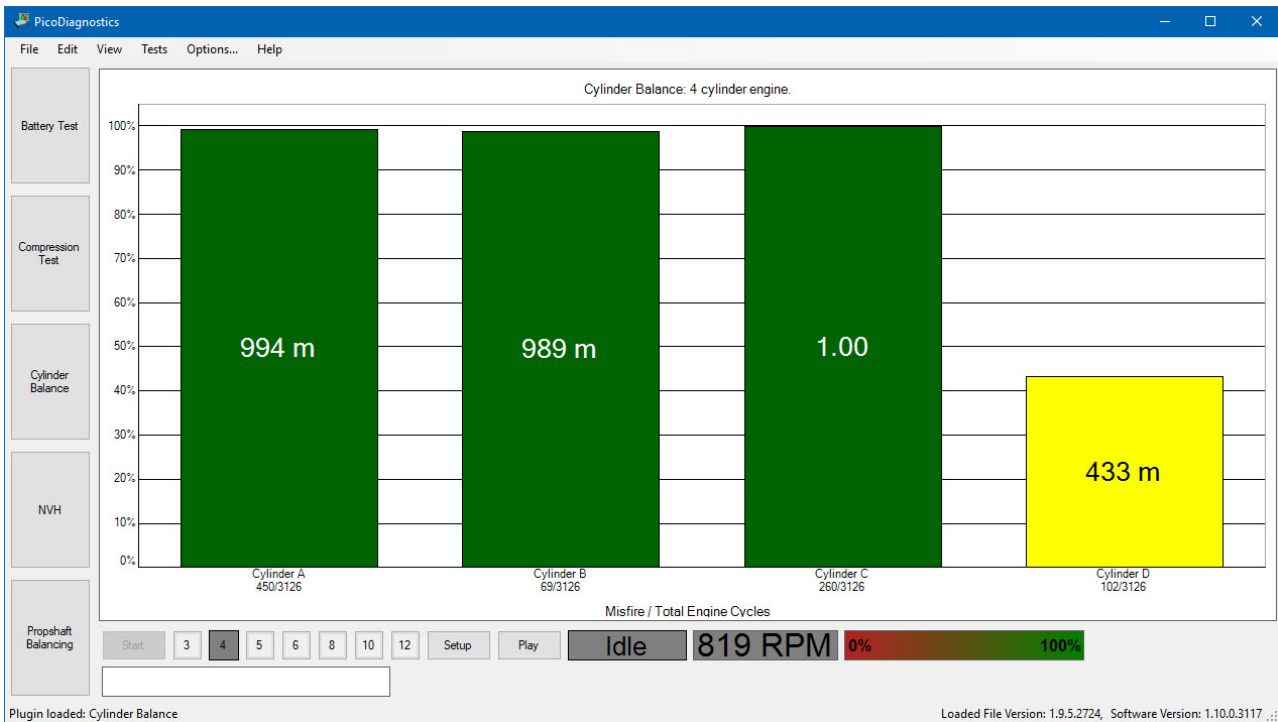
#### 4.1.2 Options

This dialog appears when you click the **Options** menu on the main [Menu bar](#) while in the [Cylinder Balance](#) test. It allows you to decide whether the cylinder balance wizard appears before running the test.



#### 4.1.3 Running the test

To start the test click **Start**. If the test successfully starts, a new window with a progress indicator will briefly appear on the screen. The data is now being analyzed and shown in real time on screen with the results appearing in the bar graph as shown below.



**The result**

If the test could not produce a result see: [Failed cylinder balance.](#)

You can stop the test at any time by simply clicking **Stop**. It is possible to then scan through the results by clicking **Play**. The results are always scaled to show the highest cylinder at 1.00.

**4.1.4 Controls**

Right-click the cylinder balance bar graph to bring up a menu with display options. You can use this menu to access more information concerning the test and its result.



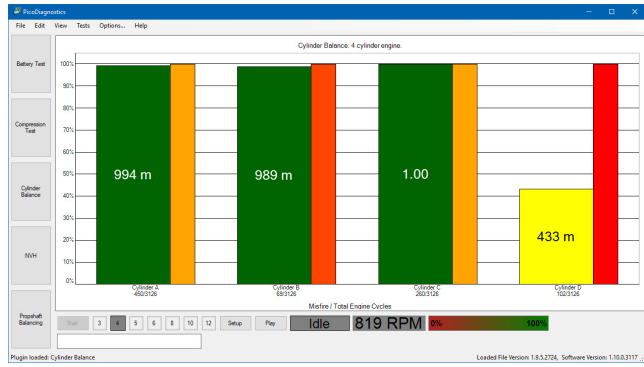
**Variation**

Displays the variation in contribution for each cylinder as an overlaid blue bar.



### Misfire

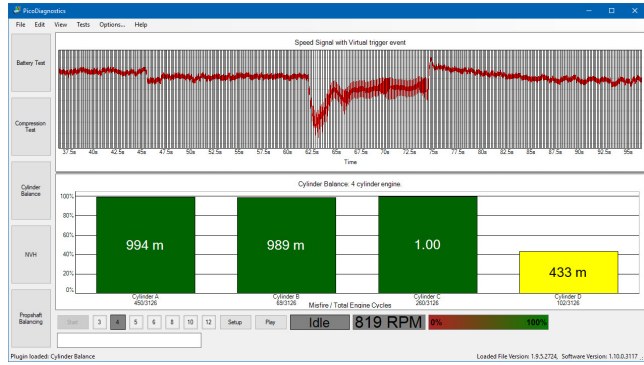
Displays suspected misfires as a separate bar for each cylinder.



### Signal

Not required for basic testing

Brings up a second graph, the [signal graph](#).

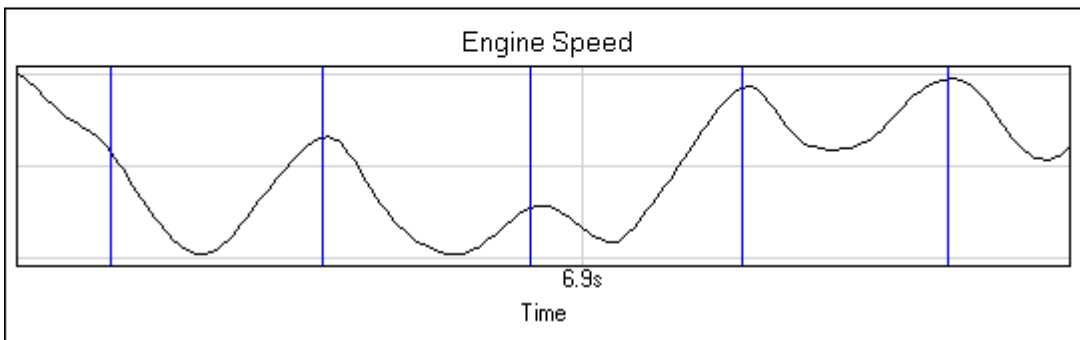
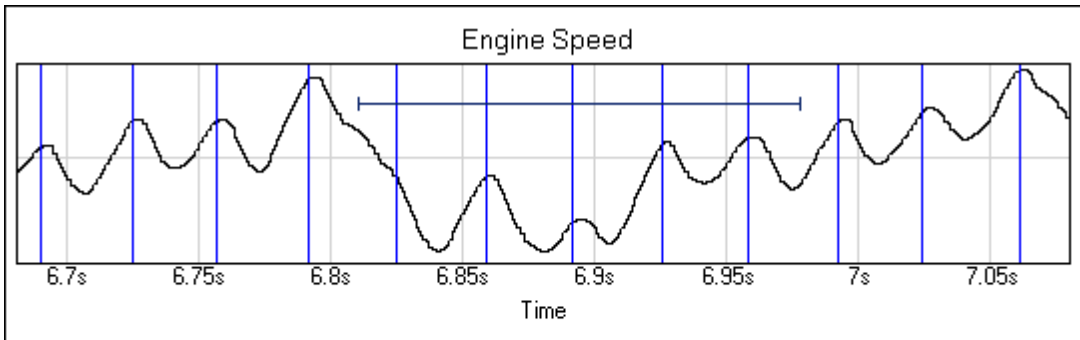


### 4.1.5 Signal graph

The signal graph displays the captured data as engine speed or cylinder contribution.

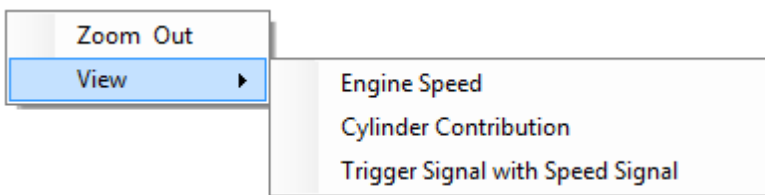
#### Zooming

You can use the mouse to zoom in on the data. Use the context menu (right-click) to zoom out again.



#### Signal graph context menu

Right-click the graph to bring up a menu with display options. You can use this menu to access more information concerning the test and its result.



#### Zoom out

This zooms out to display the full data set.

#### View

You can choose to view the engine speed, the **Cylinder Contribution**, or view the **Trigger Signal with Speed Signal**.

## 4.1.6 Failed test



If the test could not produce a result, make sure that:

- the connection to the battery is good
- the tension of the alternator belt is adequate.

It may also help if you switch the headlights on full beam and switch on other electrical loads, such as the rear windscreen heater and fog lights.

There are some engines for which the test has difficulties producing a result. These include:

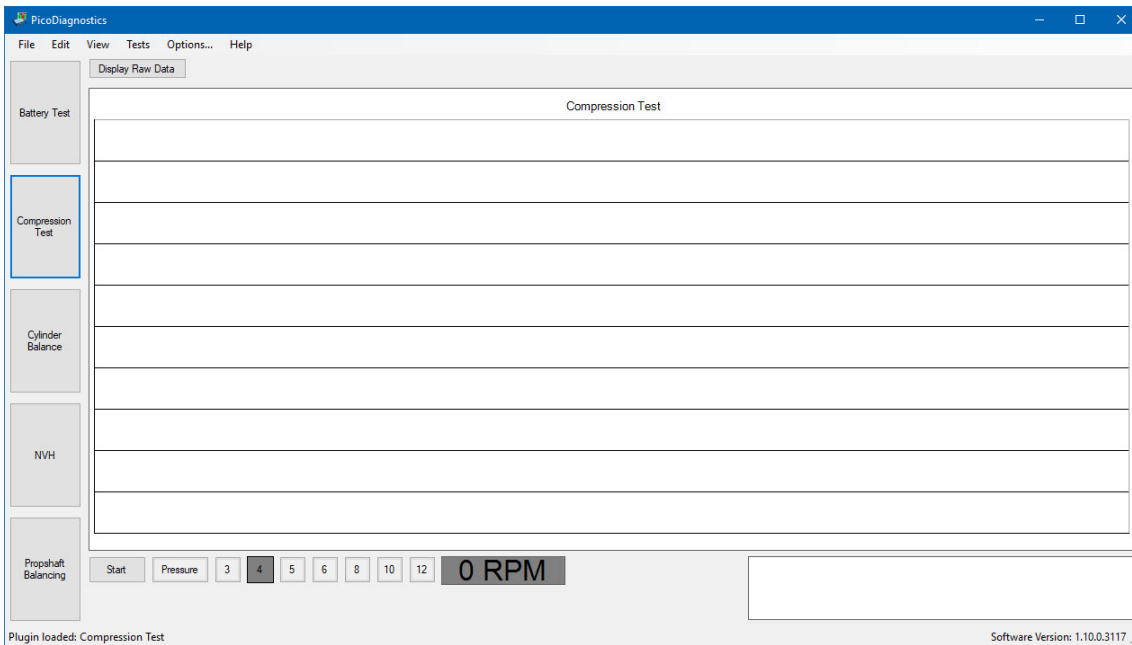
- engines with more than 8 cylinders
- some engines with dual-mass flywheels
- engines with inertial dampers
- some engines with smart alternators
- vehicles with xenon lights

### **If there is still a problem**

If you have checked the points mentioned above and the software still cannot produce a result, we would like you to send us a copy of the of the failed test data. Please enter as much information as possible about the vehicle tested. This is done via the [Details](#) dialog. Save the test to a file using the **File > Save** menu and email the file to us on [support@picotech.com](mailto:support@picotech.com).

## 4.2 Compression Test

The **Compression Test** is meant to be a first check. If the compression looks good, you can quickly move on and investigate other components which might be the cause of the fault. If the test detects a low cylinder, you should perform a manual compression test to verify the results and to work out which cylinder is low.



**Compression test - before starting the test**

There are two types of compression test:

- **Relative compression** - requires no pressure transducer, only a connection to the battery.
- **Absolute compression** - requires a connection to the battery and a pressure transducer connected to a spark plug port.

### 4.2.1 Test conditions

The following test conditions must be met before you can run the test:

- The engine must be at normal operating temperature. You can confirm this by waiting until the cooling fan has been activated twice, and referencing the temperature gauge on the dashboard.
- The engine must be off before you connect the oscilloscope.
- The cranking speed must be normal (the battery must be charged).

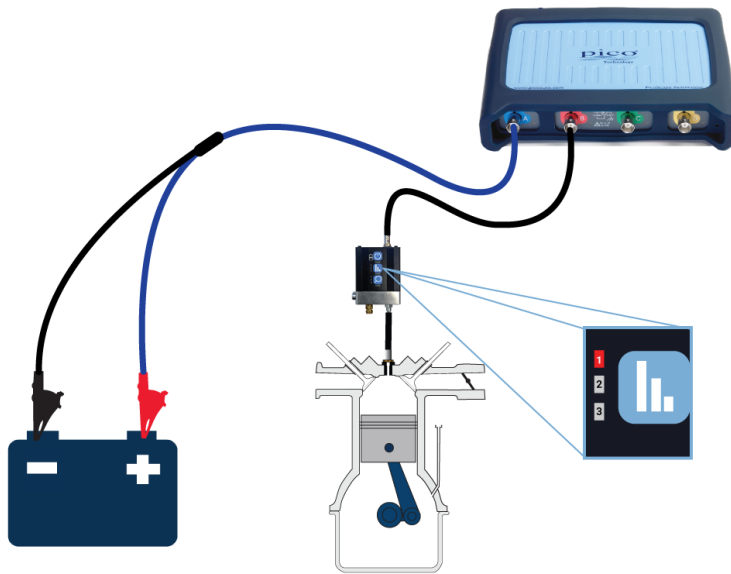
## 4.2.2 Connecting the PicoScope

Connect your scope to a free USB port on your PC with the USB cable.

Connect one of the general BNC test leads to **Channel A** on your scope. Connect a large red crocodile clip to the red end of the lead and a large black crocodile clip to the black end of the lead. Connect the red clip to the battery positive (+) terminal and the black clip to the battery negative (-) terminal.

### Connecting the pressure transducer (absolute compression test only)

Remove the spark plug from Cylinder 1. Fit a compression hose into the empty spark plug socket and attach it to the pressure transducer's inlet port (as shown in the picture below). Then connect a BNC-to-BNC lead from the pressure transducer to **Channel B** on your scope.



### Disabling the engine

The compression test can only be performed when the engine is cranking, so it must be prevented from starting. You can do this by removing the engine management relay from the fuse box or disabling the injectors.

## 4.2.3 Test setup

The compression test should be performed according to the vehicle manufacturer's specification.

- If you are using the pressure transducer, click **Pressure**.
- Next, click the numbered button corresponding to the number of cylinders in the engine.



## 4.2.4 Options

This dialog appears when you click either the **Options** menu on the main menu bar in the [Compression Test](#), or the **Pressure** button located at the bottom of the screen. It allows you to set special options before running the test. These options apply only to the absolute compression test, and not to the relative compression test.

Compensate	<input checked="" type="checkbox"/>
Cylinder Volume (l)	500mL
Compression Ratio (X:1)	10 :1
Sensor Volume (l)	5.00mL
Engine Capacity	2000 CC
Use Pressure Sensor	<input checked="" type="checkbox"/>

**Compensate**

Check to use the **Cylinder Volume**, **Compression Ratio** and **Sensor Volume** parameters. Leave unchecked to ignore these values.

**Cylinder Volume (l)**

The volume of the cylinder in liters.

**Compression Ratio (X:1)**

The compression ratio of the cylinder. For example, if the compression ratio is 11:1, enter 11.

**Sensor Volume (l)**

The volume of the pressure sensor in liters. This information should be available from the manufacturer of the sensor. If in doubt, do not alter the value in this box.

**Engine Capacity**

The size in cubic centimeters (cc) of the engine under test.

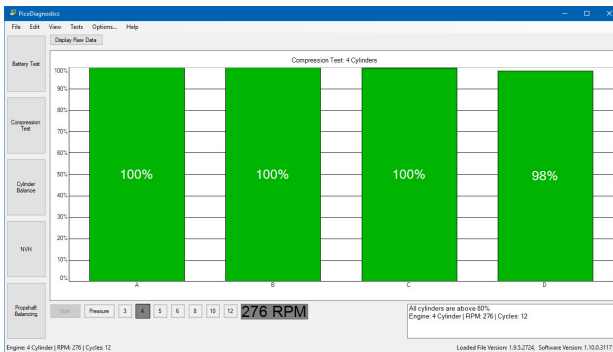
**Use Pressure Sensor**

Indicates whether a WPS500X pressure transducer is being used during the test.

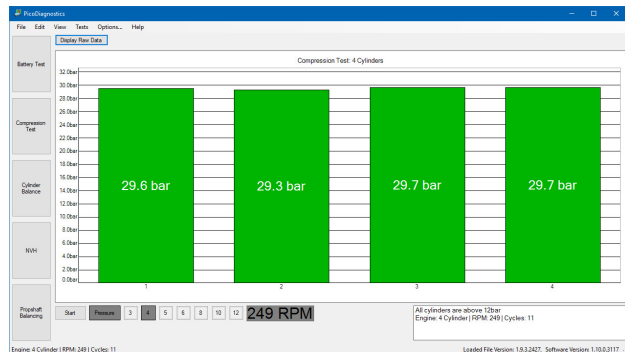
## 4.2.5 Running the test

- To start the test, click **Start**.
- A new window with a progress indicator and instructions will appear on the screen. Wait until the message in the window is "**Crank engine**".
- With the throttle wide open (accelerator pedal fully depressed), crank the engine until the progress indicator reaches 100%.

The data is now analyzed and the result appears in a bar graph, as in one of the examples below:



**Compression test result -  
without pressure sensor  
(relative mode)**



**Compression test result -  
with pressure sensor  
(absolute mode)**

In relative compression mode, the result is always scaled to show the highest cylinder at 100%. The bars are ordered according to the engine's firing order. The cylinders are named A, B, C and so on, because with only a connection to the battery the software has no way of knowing which cylinder is number one. This may cause the result to be shifted if you run the test on the same engine more than once.

In absolute compression mode, PicoDiagnostics shows the true compression in each cylinder. As in relative compression mode, the bars are named A, B, C and so on.

### The result

If the test could not produce a result, see [Failed test](#).

## 4.2.6 Failed test



If the test could not produce a result, make sure that:

- the connection to the battery is good
- there is not a battery charger connected to the vehicle's electrical system.

### **If there is still a problem**

If you have checked the points mentioned above and the software still can't produce a result, we would like you to send us a copy of the of the failed test data. Please enter as much information as possible about the vehicle tested. This is done using the [Details](#) dialog. Save the test to a file using the [File | Save menu](#) and email the file to us at [support@picotech.com](mailto:support@picotech.com).

**Note:** Some engines fitted with a flat-plane crank can give spurious low compression readings.

## 4.3 Battery Test

To use the battery test, start PicoDiagnostics and click **Battery Test**.

**Tip:** If the battery has been recently charged, there is a risk of "surface charge" affecting the state-of-charge results. To eliminate the surface charge, switch the lights on full beam for about 2 minutes, switch them off, and then wait for about 2 minutes before performing the test. If you are only measuring cold cranking amps (CCA), you can ignore this precaution.

Note: It is important not to confuse the industry-standard method of battery testing (SAE EN DIN) with the PicoDiagnostics battery test, even though the results stated are in the same units of CCA. The CCA rating of any battery is a figure arrived at by design. Therefore, any battery test result (measured in CCA) obtained by running a PicoDiagnostics battery test can only ever be an instantaneous and calculated estimate based on the measured resistance of the battery, with the advantage of being able to safely draw current from the battery where other tests don't.

Follow the instructions below to connect your PicoScope to the vehicle and run the test.

- Connect the PicoScope
- Set any special [test options](#)
- Run the test
- [If the result is blank](#)

## 4.3.1 Connections

### Connect the PicoScope

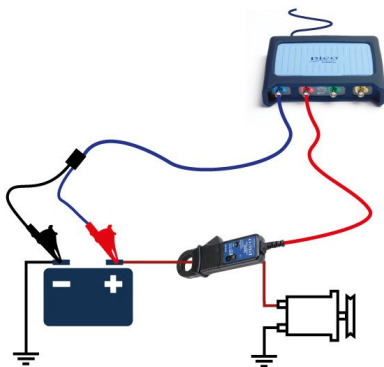
Connect the PicoScope to a free USB port on your PC using the USB cable.

### Channel A: Battery voltage

Connect one of the general test BNC cables to **Channel A** on your PicoScope. On the other end, connect a large red crocodile clip to the red lead and a large black crocodile clip to the black lead. Connect the red clip to the battery positive either on the battery or in the fuse box. Connect the black clip to a secure earth (ground) point as shown in the picture below.

### Channel B: Starter motor current

Connect a high amp current clamp to **Channel B** on the PicoScope. Place the current clamp so that it is positioned around the positive cables which are connected to the positive battery terminal. More importantly make sure the current clamp is positioned around the starter motor positive or negative cable in order to record the cranking current from the starter.



If you have a 4-channel scope then you can run the optional extended drop test.

### Additional connections for extended drop test

In addition to connecting **Channel A** and **B** as described above, **Channel C** and **D** must also be connected as follows:

### Channel C: Starter motor positive terminal

Using a BNC to 4 mm lead, connect the red 4 mm plug to the positive terminal of the starter motor using the appropriate clip / connector. This is the terminal that the main positive cable from the battery connects to.

### Channel D: Starter motor negative terminal

Using a BNC to 4 mm lead, connect the red 4 mm plug to the negative terminal of the starter motor using the appropriate clip / connector.

Note: Most modern vehicles don't have earth cables to the starter motor. In this case connect to one of the mounting bolts by which the starter motor is attached to the engine or gearbox bell housing, as the starter will earth through to chassis and/or battery.

This will enable PicoDiagnostics to separate the cable resistance from the starter motor resistance.

All connections must be clean and free from oil, grease and dirt to ensure the readings are accurate.

## 4.3.2 Setup

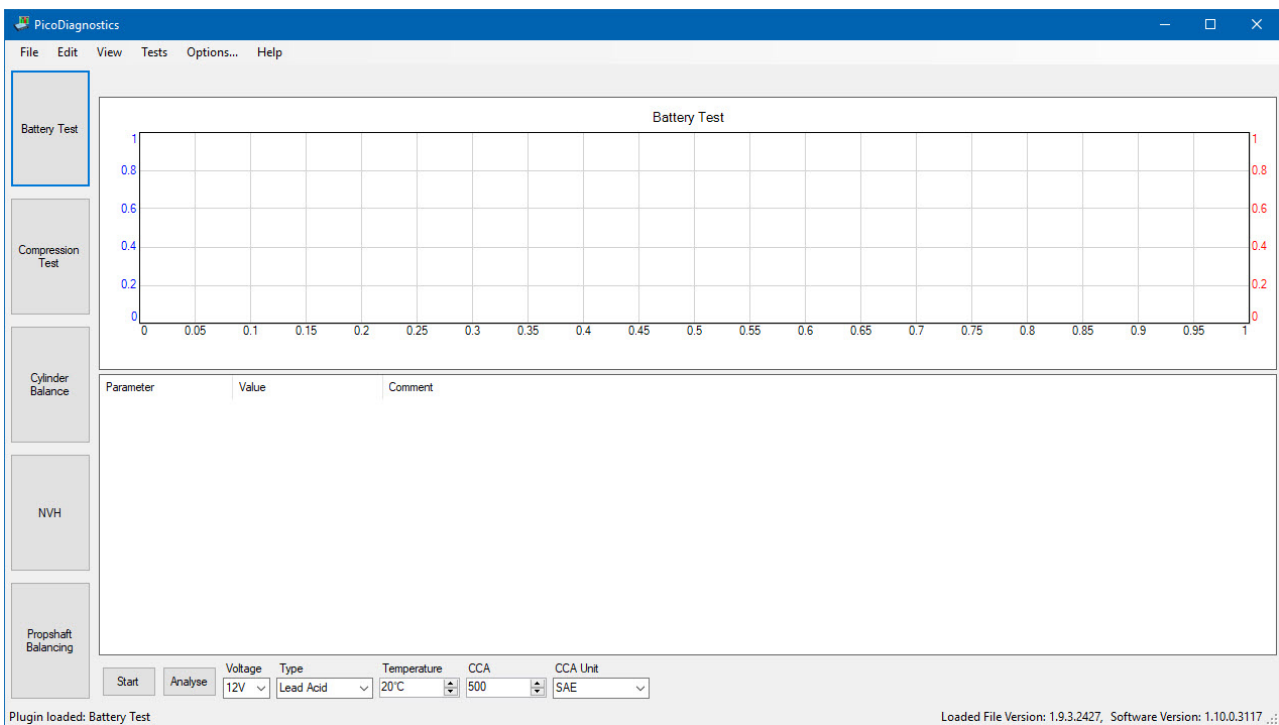
First, click either **12 V** or **24 V** depending on the voltage of your electrical system.

**Tip:** If you have a **24 V** system with two 12 V batteries, test each battery separately. Otherwise one good battery could hide a fault in the other battery.

Next, set the **Type** of battery to match the battery you wish to test.

Set the **Temperature** to the local ambient air temperature in °C or °F depending on your settings in the [Preferences](#) dialog.

The battery capacity in cold cranking amperes (**CCA**) should now be entered, along with its standard (**CCA Unit**).

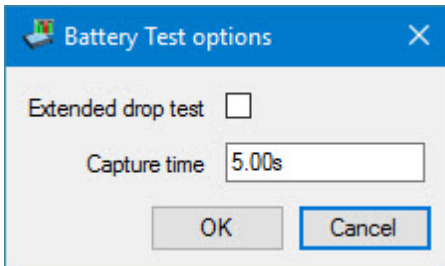


Now, set the [Battery Test options](#).

### 4.3.3 Options

This dialog appears when you click the **Options** menu on the main menu bar while the [Battery Test](#) is selected. Here you can:

- Enable the [Extended drop test](#) options
- Adjust the **Capture time** of the test



- Click **OK** to confirm

## 4.3.4 Running the test

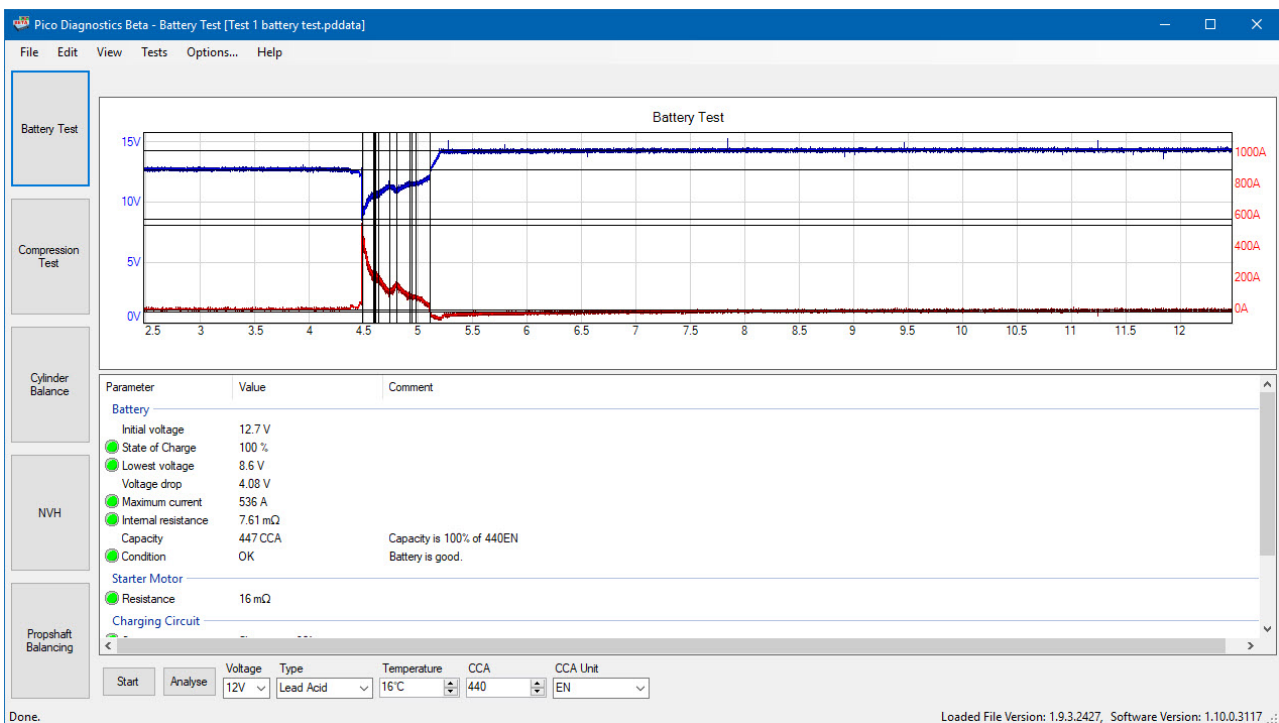
Click **Start**.

Note: Because the engine is not drawing any current at this stage, the program will draw a horizontal line showing zero amps of current. If this line is not at zero amps, the current clamp may need to be adjusted. Press the "Zero" button or turn the "Zero" dial on the clamp until the horizontal line is at zero amps.

Start the engine.

While the test is running, the program shows the voltage on **Channel A** and the current on **Channel B**, and a graph is drawn from left to right. The program automatically stops recording data when it has enough information, so there is no need to click the **Stop** button unless you wish to stop the test early.

The program then analyses the data and shows the results in a table, as in the picture below:












If the program reports "**Battery has failed the test - refer to help file for advice**", see [Interpreting the Results](#).



### 4.3.5 Interpreting the results

The results from the battery test are displayed in a traffic light system. Green is a pass, yellow is a warning and red is a fail.

Parameter	Value	Comment
<b>Battery</b>		
Initial voltage	12.2 V	
 State of Charge	40 %	
 Lowest voltage	5.36 V	
Voltage drop	6.82 V	
 Maximum current	306 A	
 Internal resistance	22.2 mΩ	
Capacity	177 CCA	Capacity is 35% of 500SAE
 Condition	Replace	Battery has failed.
<b>Starter Motor</b>		
 Resistance	17.6 mΩ	
<b>Charging Circuit</b>		
 Status	Charging at 80%	
 Voltage	14.1 V	
 Ripple	531 mV	
Current	19 A	

#### Battery test parameters:

<b>Battery:</b>	
<b>Initial voltage</b>	Open circuit voltage (OCV) test at initial connection
<b>State of charge</b>	State of charge (SOC) percentage based on initial voltage
<b>Lowest voltage</b>	Lowest recorded voltage during cranking
<b>Voltage drop</b>	The voltage differential between OCV and lowest recorded voltage
<b>Maximum current</b>	Maximum recorded inrush current that initiates starter motor/engine rotation
<b>Internal resistance</b>	The internal resistance of the battery
<b>Capacity</b>	The instantaneous CCA is calculated for the industry-standard CCA unit chosen in <a href="#">Setup</a> and from the measured OCV, lowest recorded voltage, voltage drop, cranking current, battery resistance, and battery recovery rate post-cranking. The CCA capacity of the battery under test is also shown as a percentage of the specified CCA.
<b>Condition</b>	Battery condition will be indicated here.

<b>Starter motor:</b>	
<b>Resistance</b>	Battery resistance is the lowest voltage divided by the maximum recorded inrush current.
<b>Charging circuit:</b>	
<b>Status</b>	Charging percentage based on the battery voltage deviation from a 100% charged battery.
<b>Voltage</b>	Nominal voltage (100% SOC)
<b>Ripple</b>	Nominal total deviation for a battery charging at nominal voltage
<b>Current</b>	Charging current

Notes:

If the SOC is low, recharge the battery and run the test again.

If the SOC is green, but the CCA are low, check the following, before you replace the battery:

- Battery connections – loose connections will increase the internal resistance.
- Battery fluid levels – if the battery is not a sealed type, check the fluid levels in each cell.

#### Changing standard CCA unit (SAE, EN or DIN), battery type or temperature, post capture

The screenshot shows a control panel with the following elements: a 'Start' button, an 'Analyse' button, a 'Voltage' dropdown menu set to '12V', a 'Type' dropdown menu set to 'Lead Acid', a 'Temperature' spinner set to '20°C', a 'CCA' spinner set to '500', and a 'CCA Unit' dropdown menu set to 'SAE'.

While your test results are displayed on-screen, you can select an alternative **CCA unit** from the drop down list, and click **Analyse**. The instantaneous estimated CCA **Capacity** results will be recalculated according to the **CCA unit** you have chosen.

You can also change the battery **Type** and click **Analyse** to recalculate the test results.

Adjusting the **Temperature** value after capture will change the results in real time.

## 4.4 Propshaft Balancing

If one or more components has been removed from the transmission system, the propshaft needs to be balanced. You can do this with the PicoDiagnostics **Propshaft Balancing** program, by fitting balancing weights on the differential coupling flange, using off-the-shelf hose clamps on the propshaft, or attaching a single balancing weight to the propshaft.

### 4.4.1 Preparing the vehicle

Raise and support the vehicle according to the manufacturer's directions. Remove the two rear wheels and secure the rotors or drums to the hub assembly. Position the vehicle on mounts in order to keep the vehicle level and at the same height as if the wheels were fitted.

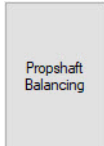
Remove any balancing weights from the flange stud bolts before you start the balancing procedure.

### 4.4.2 Running PicoDiagnostics

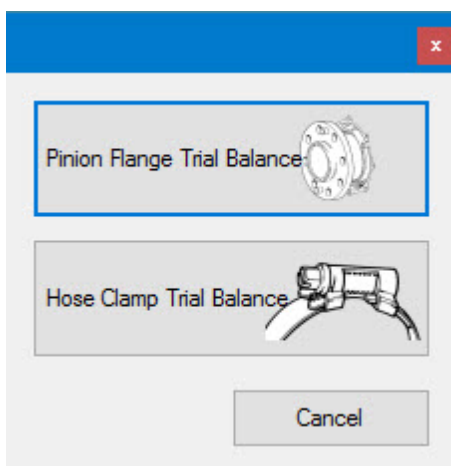
The propshaft balancing procedure is divided into four stages:

- **Initial Run**
- **Calibration Runs**
- **Verification**
- **Free run**

Click **Propshaft Balancing**:



In the propshaft balancing wizards selection screen, click which test format you would like to use to complete the propshaft balancing test.



The program displays step-by-step instructions in the form of a wizard for both formats of this test. We recommend that you follow your chosen procedure carefully.

### 4.4.2.1 Pinion Flange Trial Balance wizard

The **Pinion Flange Trial Balance** wizard guides you through the various steps required to complete the test. These steps cover:

- The connections to the scope
- The mounting of the accelerometer to the vehicle
- How to fit the magnetic mount and optical sensor (if required) to read the propshaft rotation speed
- The entry of required technical data

#### **Before you begin**

- Make sure that the vehicle is properly supported (refer to service information)
- Remove rocks and debris from the tires
- Make sure that all the leads are clear of rotating components
- Disable the ABS and Traction control if equipped
- Turn off the AC and other accessories

Find a suitable shaft speed. Run the engine with the transmission in high gear to highway speed (65 to 70 mph or 105 to 113 km/h typical). The software captures the RPM when held stable for more than 3 seconds, or you can click the **Edit Manually** box and enter the desired shaft speed.

After you have finished the verification run, the final imbalance is displayed by the software. If the imbalance exceeds the minimum requirement, the software will suggest that you remove the rear tires (make sure that the rotors or drums are secured to the hub) and start the test again.

If you choose to restart the test, remove all the balance weights first. You can click the **Initial Run** button to restart the test or the **Propshaft Balancing** button to go back through the setup wizard.

### 4.4.2.2 Hose Clamp Trial Balance wizard

The **Hose Clamp Trial Balance** wizard will guide you through the various steps required to complete the test. These steps cover:

- The connections to the scope
- The mounting of the accelerometer to the vehicle
- How to fit the magnetic mount and optical sensor (if required) to read the propshaft rotation speed
- The entry of required technical data

#### **Before you begin**

- Make sure that the vehicle is properly supported (refer to service information)
- Remove rocks and debris from the tires
- **M**ake sure that all the leads are clear of rotating components
- Disable the ABS and Traction control if equipped
- Turn off the AC and other accessories

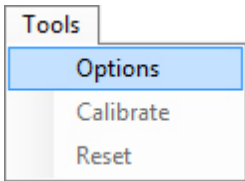
Find a suitable shaft speed. Run the engine with the transmission in high gear to highway speed (65-70 mph typical). The software will capture the RPM when held stable for more than 3 seconds, or you can click the **Edit Manually** box and enter the desired shaft speed.

After you have finished the verification run, the final imbalance will be displayed by the software. If the imbalance exceeds the minimum requirement, the software will suggest that you remove the rear tires (make sure that the rotors or drums are secured to the hub) and start the test again.

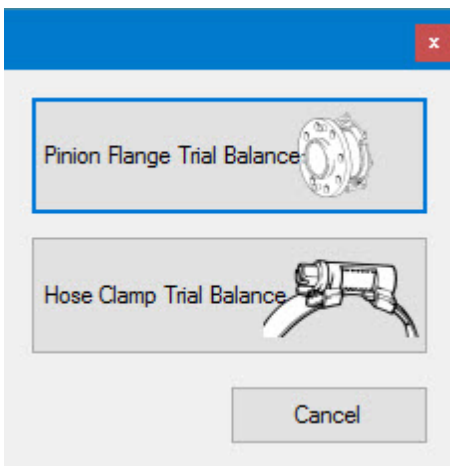
If you wish to attach a single weight, the hose clamps can be removed and replaced with a single weight as indicated by the software at the location of the blue arrow.

### 4.4.2.3 Options

You can find the **Options** menu under **Tools** on the main menu bar in the [Propshaft Balancing](#) test.



When you click **Options** the propshaft balancing wizards selection screen is shown, allowing you to choose between test formats.

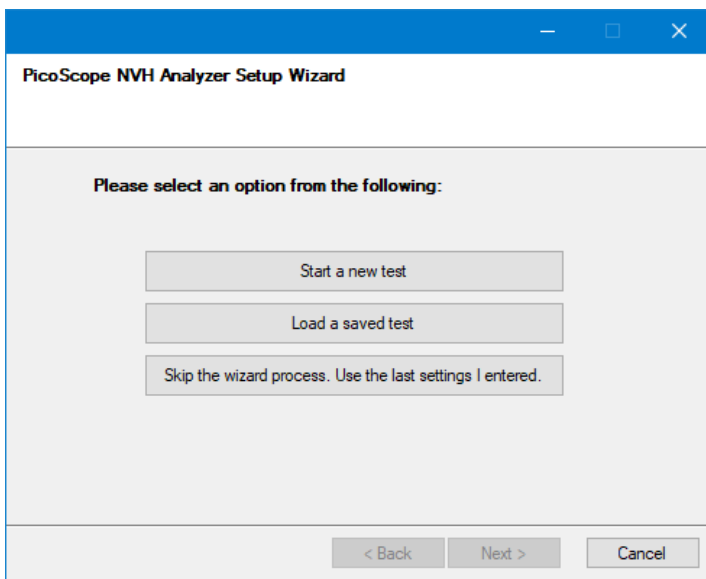


## 4.5 NVH

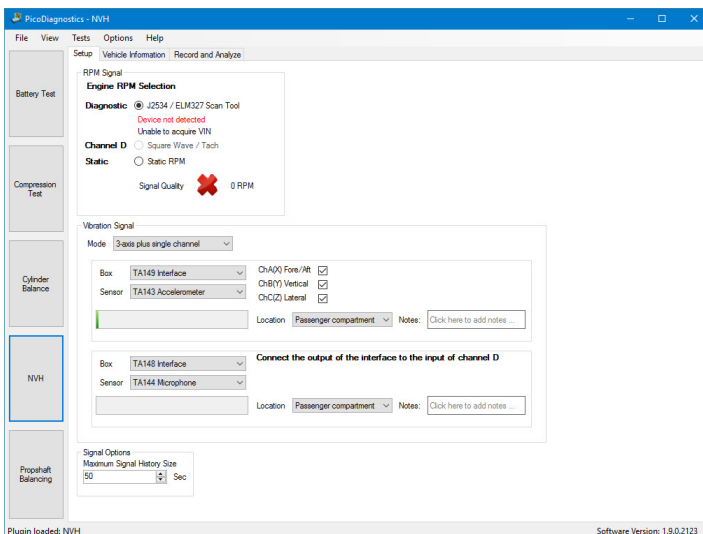
NVH (Noise, Vibration and Harshness) is the study of unwanted movements and sounds generated by a vehicle. The PicoDiagnostics NVH software can analyze vibrations and help to diagnose NVH problems. All you need is a PicoScope Automotive oscilloscope and a Pico NVH diagnostic kit.

### 4.5.1 Setup tab

If you have cancelled the **PicoScope NVH Analyzer Setup Wizard** but an NVH test is required, the Wizard can be restarted by clicking the **NVH** button, or by choosing **NVH** from the **Tests** menu.



As an alternative to using the **Wizard**, you can enter settings manually in the **Setup** page as follows:



### 4.5.1.1 RPM signal

You need to select an **RPM Signal** source. You can choose between:

- **J2534 / J1939 / ELM327 scan tool**
- **Square Wave / Tach**
- **Static RPM**

#### J2534 / J1939 / ELM327 scan tools

- Plug the ELM327 scan tool into a USB port on the computer.
- Check that the program recognizes the scan tool.
- Plug the J2534 / J1939 scan tool into the 16-pin (OBD-II or EOBD) diagnostic socket in the vehicle.
- Start the engine and check that the RPM signal is being received.

#### Square Wave / Tach

For this option you can connect any signal proportional to RPM, such as crankshaft, to either **Channel A** of a 2-channel automotive scope or **Channel D** of a 4-channel automotive scope.

#### Static RPM

If the vehicle will remain at a static RPM during the test, enter the RPM value here.

### 4.5.1.2 Vibration signal

The **Vibration Signal** settings also require confirmation.

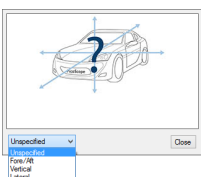
#### Box

Refers to which NVH interface you have connected to the PicoScope oscilloscope (see the label on the underside of the interface).

#### Sensor

Used to select the type of sensor connected to the NVH interface.

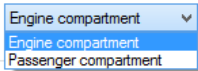
#### Orientation



While this setting makes no difference to the way in which the software records data, it is a useful feature for specifying the orientation of the accelerometer during the test.



## Location



Indicates where the sensor will be placed. If you can feel the vibration when sitting inside the vehicle, select **Passenger compartment**. If the software then identifies the problem vibration as originating from the engine, move the accelerometer into the engine bay, and select **Engine compartment**.

**Notes** are used to record specific information about the test. The notes will appear as a tooltip while viewing the bar graph data and hovering over each graph with the mouse pointer. Each interface box has its own notes area, and each note entry field is limited to 1000 characters.

**Mode** informs the software of the equipment you have connected to the oscilloscope. The available choices are **Single Channel, 3-axis, 3-axis plus Single Channel**, or **Multiple Sensors**.

### Single channel

This mode is for use with a single-axis accelerometer, a single channel of a 3-axis accelerometer, and when using a microphone.

### 3-axis

The 3-axis option from the Mode selection alters the user interface slightly, revealing additional setup options.

**ChA(X)** If checked, this instructs the program to record signal data for the X axis.

**ChB(Y)** If checked, this instructs the program to record signal data for the Y axis.

**ChC(Z)** If checked, this instructs the program to record signal data for the Z axis.

Note: The Z axis is unavailable if the NVH Interface has been connected to a 2-channel automotive scope.

### 3-axis plus single channel

Note: The 3-axis plus Single Channel mode is unavailable if the NVH Interface has been connected to a 2-channel automotive scope.

The 3-axis plus Single Channel option from the Mode selection alters the user interface slightly, revealing additional setup options.

**ChA(X)** If checked, this instructs the program to record signal data for the X (fore/aft) axis.

**ChB(Y)** If checked, this instructs the program to record signal data for the Y (vertical) axis.

**ChC(Z)** If checked, this instructs the program to record signal data for the Z (lateral) axis.

**channel D (X, Y or Z)** This is an additional axis. You can add either a microphone or you can add a single channel of a 3-axis accelerometer, and select between X (fore/aft) axis, the Y (vertical) axis or the Z (lateral) axis.

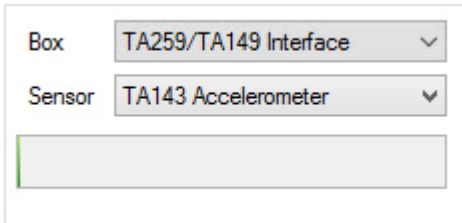
### Multiple sensors

The **Multiple sensors** option from the **Mode** selection alters the user interface slightly, revealing additional setup options. You can have any combination of accelerometer axis inputs or microphones using multiple sensor mode. You must inform the software of how many interface boxes you have attached to your PicoScope oscilloscope, and specify the type of sensor attached to each. The number of interfaces connected can be adjusted in the box next to the **Mode** option, and can have the value of 2, 3 or 4.

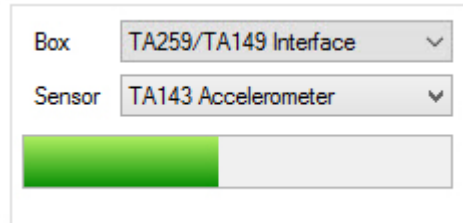
### Signal quality check

The Vibration Signal on the **Setup** tab includes a green signal quality bar. Here you are able to check that the software is registering the signal from the accelerometer or microphone. Tap the accelerometer with your finger and check that a pulse is shown on the signal bar:

#### No vibration:



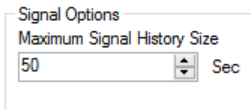
#### Vibration detected:



### 4.5.1.3 Signal Options

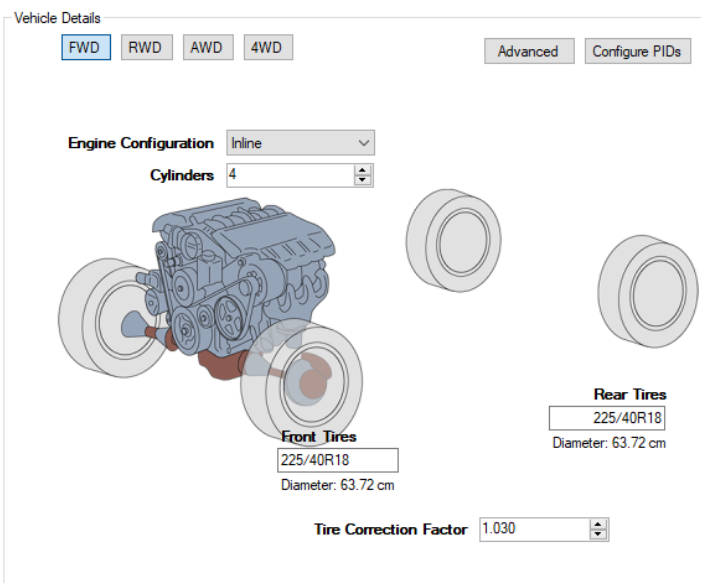
Use this to set the desired capture time, which can be from 50 to 500 seconds.

Note: Increasing the capture time can significantly increase the file size.



This box is not displayed on the setup screen by default. You can change this by ticking the **Enable Advanced Options** box in the [Advanced Options](#) dialog.

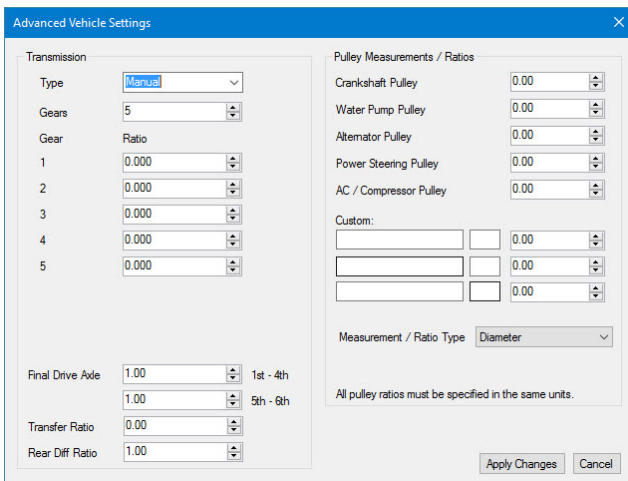
### 4.5.2 Vehicle information



Under the **Vehicle Information** tab, select the vehicle's drivetrain configuration.

There is an added feature for managing and using Parameter IDs (PIDs). Click the [Configure PIDs](#) button to use it.

#### 4.5.2.1 Advanced button



Select the **Advanced** button to enter more specific vehicle details.

### 4.5.2.2 Configure PIDs button

“Graphing PIDs” or in full “Graphing OBD-II parameter identification codes” are standardized codes sent via a scan tool to the relevant vehicle network to request specific data. The SAE standard J1979 defines several PIDs, but many more PIDs are specified by the respective vehicle manufacturers. Typically, technicians use PIDs with a scan tool connected to the vehicle's OBD-II connector.

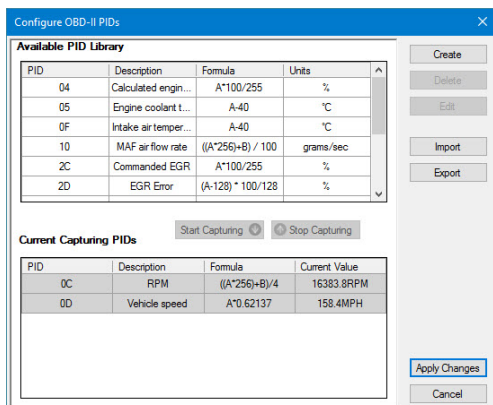
The PID is sent to the vehicle's controller-area network, a device on the bus recognizes the PID and reports the value for it back to the bus, from which it is sent to the scan tool and displayed to the technician.

Note: You can only view the values from the PIDs in the Time Domain view on the record and analyze tab.

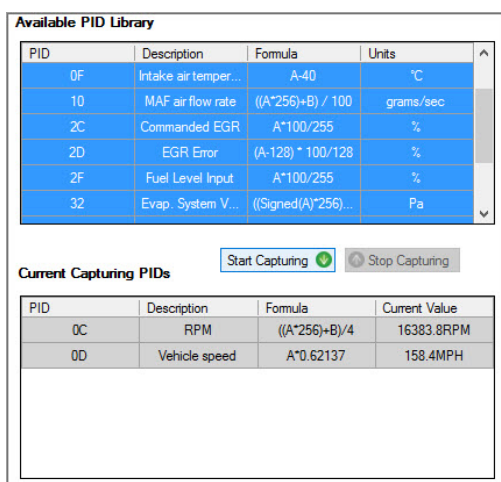
The NVH software utilize these PIDs to request engine and road speed data via the J2534 OBD interface (MongoosePro ISO/CAN 2).

Both engine and road speed are graphed in the signal history in order to identify the vehicle condition under a variety of noise and vibration symptoms. You can request a number of OBD-II parameters using available PIDs stored in the PID library in PicoDiagnostics NVH.

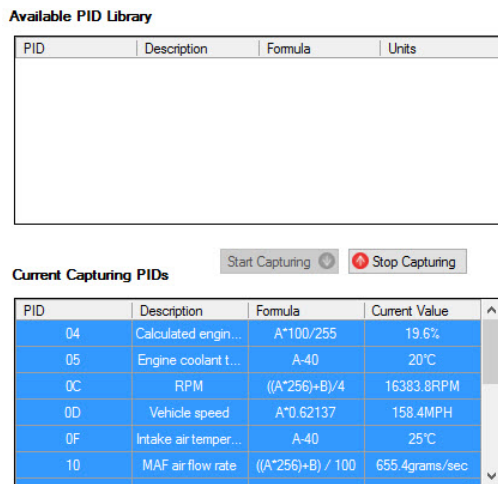
To access the PID library click on the **Vehicle Information** tab and select **Configure PIDs** where **Available PIDs** can be selected then added to the **Current Capturing PIDs** table.



The Configure PIDs dialog includes two lists, along with several functions. The first list is called **Available PID Library**. This list contains PIDs that you can select to capture, edit, delete or export. The second list is the **Current Capturing PIDs**, which shows you the PIDs in use and their current values.

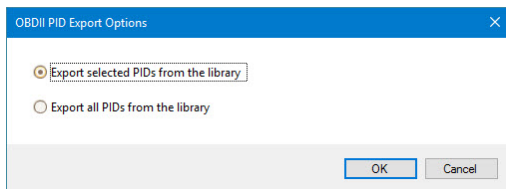


When you select one or more PIDs from the **Available PID Library** list you have the option to click on the **Start Capturing** button. By clicking this button you move the selected PIDs to the **Current Capturing PIDs** list and will be able to read the values.

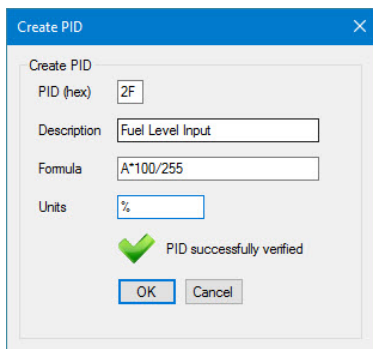


If you want to remove PIDs from the **Current Capturing PIDs** list you select them and click the now active **Stop Capturing** button, which will move them back to the library list.

Note: "**Engine speed**" and "**Vehicle speed**" are active by default, and cannot be removed.



You can export PIDs as .pdpid files by selecting one or more PIDs from the **Available PID Library** list and clicking on **Export**. You will then be asked if you want to export only the selected files or the entire Library, before you select the directory to save to.



You can import exported .pdpid files to add to the **Available PID Library** list.

You can create new PIDs by clicking the **Create** button. You will then see the **Create PID** dialog box. Enter the PID (hex) along with its description formula and unit. Click **OK** to create the PID.

### 4.5.3 Record and analyze page

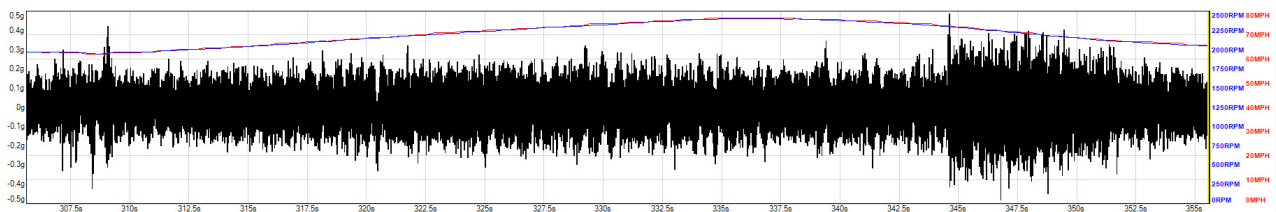
To begin the test:


Click the **Start Recording** button: 

The time chart at the bottom of the screen will show the signal from the accelerometer. Start the engine.

Note: If the vibration can be felt while the vehicle is stationary then the test can be done in the workshop. Otherwise, a road test will be necessary.

Run the road test or workshop test while **PicoDiagnostics** captures data from the vehicle. You will see data appearing in the signal history window at the bottom of the screen. This chart also shows RPM, road speed and gear selection (only visible if transmission ratios have been entered under the **Advanced** button of the **Vehicle Information** tab) for the duration of the test.

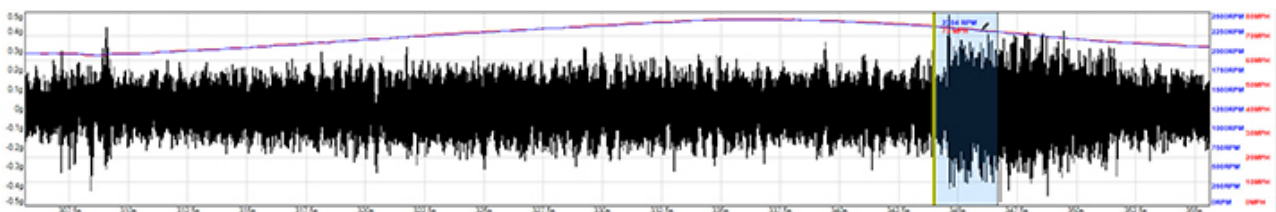


When the test is finished, click the **Stop Recording** button: 

To reset the current capture and clear any recorded data while retaining the test settings, click the **Reset Current Capture** button: .

### 4.5.4 Viewing the results

For the clearest results, select the region of the test where the vibration was at its strongest. Do this by dragging the mouse over the time chart from the beginning to the end of the region of interest.



You can view the results in a number of ways. Click on the view button for the view you wish to display:

Frequency

3D Frequency

Road Speed

RPM Order

Bar Graph

Diagram

Time Domain

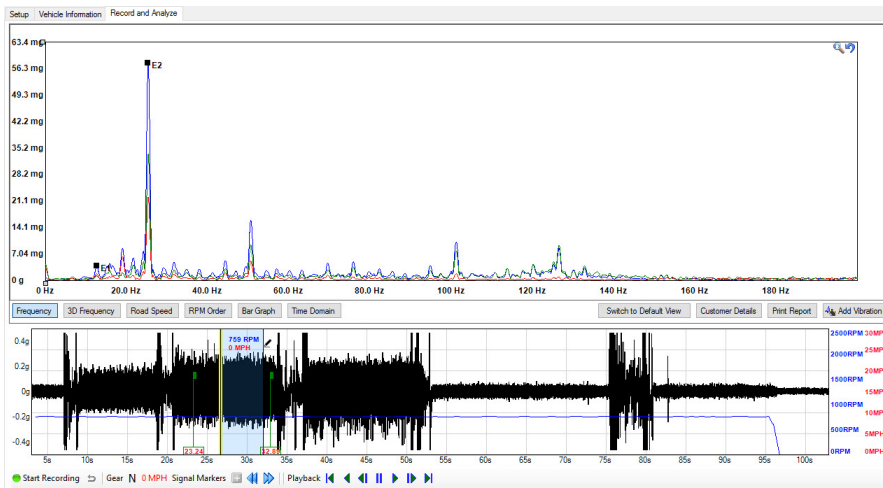
### 4.5.4.1 Frequency graph

The **Frequency** graph displays the relevant spectrum for the sensor in use. The accelerometer, for example, has a default value of 0-350 Hz but you can change this in the [Advanced Options](#).

In the example below, the main vibration detected is clearly identified as an E2 (second order engine vibration). An E2 vibration is quite normal with a 4 cylinder 4 stroke engine, as the crankshaft is subjected to two firing events every revolution. (Twice the fundamental frequency of the engine, E1). The accelerometer will detect the level of E2 vibration and display the amplitude in "mg" units in the frequency graph. Each individual axis of a 3-axis accelerometer can be displayed by selecting **Display Mode** and **Single** by right-clicking on the frequency graph. Each axis is represented by a different color and its respective amplitude indicated along the Y-axis.

An excessive amount of E2 could indicate a problem with engine mounts or the "contact" between the engine and the chassis.

By default the **Frequency** display (FFT) window requires a minimum of 2.5 seconds of continual disturbance to process the event. The FFT window is configurable on the **Advanced Options**, **FFT** tab (accuracy vs responsiveness slider).



### 4.5.4.2 RPM Order graph

By selecting **RPM Order** you will see the frequency display converted to indicate vibration levels relevant to engine speed/frequency. The RPM order display is now scaled in multiples of the fundamental engine speed (E1) allowing the NVH software to track and display engine vibration orders in a fixed position regardless of engine speed. This is particularly useful should you wish to monitor engine vibration orders at varying engine speeds and loads. The images highlight the effects on an E2 (second order engine) vibration from a four stroke four cylinder engine under acceleration (Figure 1) deceleration (Figure 2) and cruising (Figure 3).

During acceleration (Figure 1: 3146 rpm) the crankshaft loading will increase due to driver demand (high **E2**). Under deceleration the opposite will occur (Figure 2: 1725 rpm) where fuel is cut during over-run and crankshaft combustion load is removed (minimal **E2**). When cruising (Figure 3: 1748 rpm), fueling and combustion are present but with reduced load upon the crankshaft (low **E2**).

Referring to all the images of the RPM order, the positions of the **E1** and **E2** markers remain fixed throughout the entire engine speed / frequency range, and the scale indicates partial, or multiples of, engine vibration orders assisting with clear identification of offending engine vibrations.

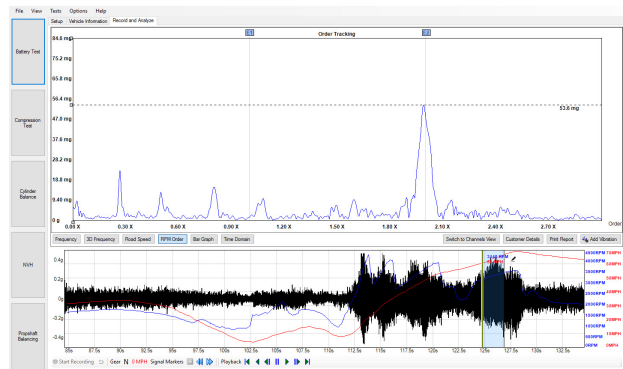


Figure 1

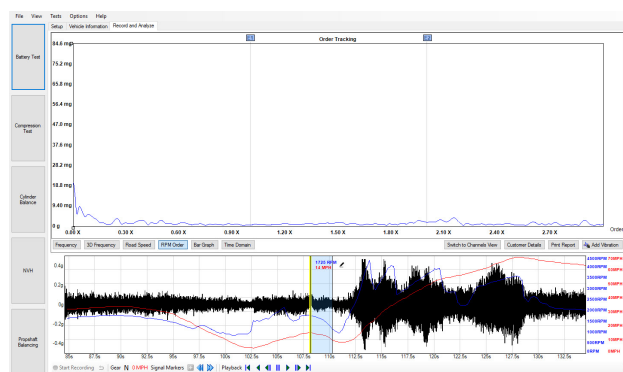


Figure 2

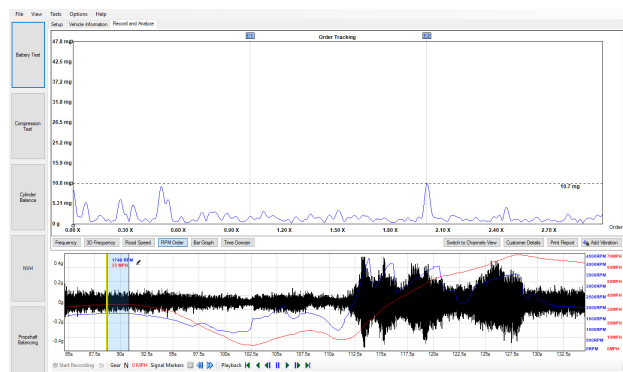
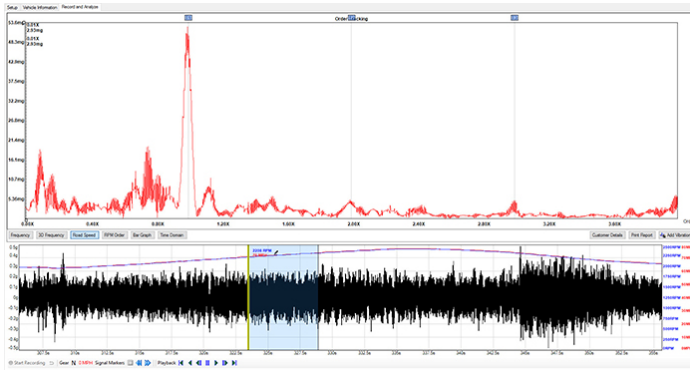


Figure 3



### 4.5.4.3 Road Speed graph

In this graph, frequencies are scaled to road speed, so wheel and axle-related harmonics appear at fixed positions regardless of road speed. This makes it easier to spot propshaft and wheel-related vibrations during a road test.

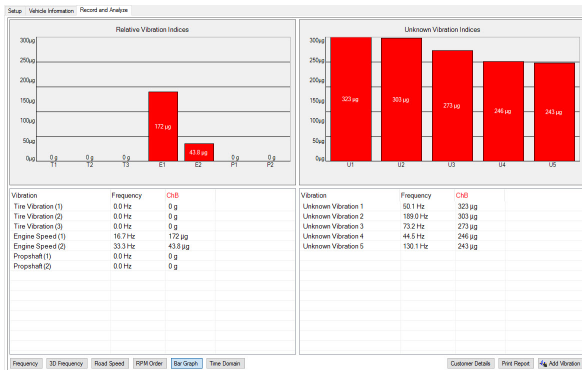


### 4.5.4.4 Bar graph

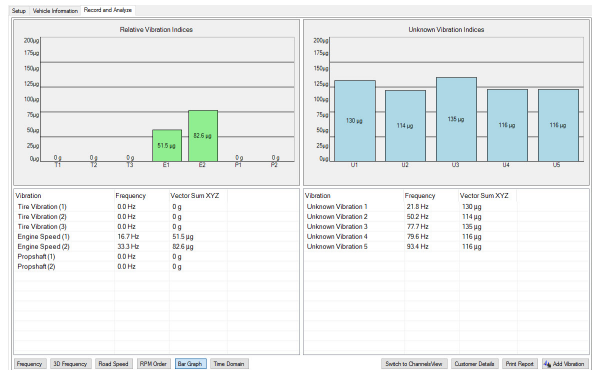
This view lists all the selected vibration harmonics and shows their values in real time. Below, **Unknown Vibration (U)** peaks have been enabled under **Add Vibration**.

With 3-axis plus single channel and Multiple sensors you have the option of adding a microphone as a sensor. When you add a microphone, the Bar Graph view in Record and Analyze will change to show the measurement dB as well as a different color on the bar compared to the vibration bars.

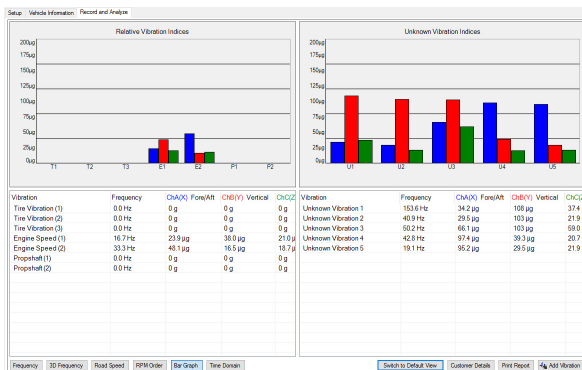
#### Single Channel



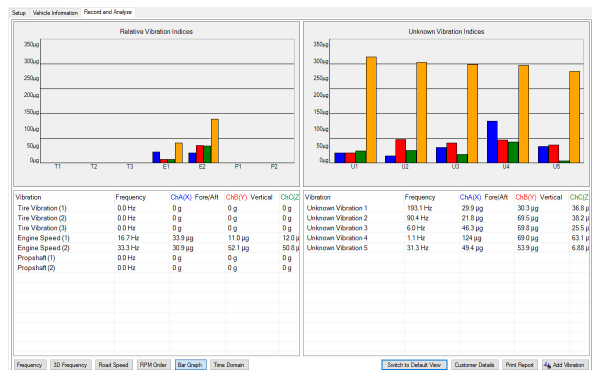
#### 3-axis Vector Sum (default view)



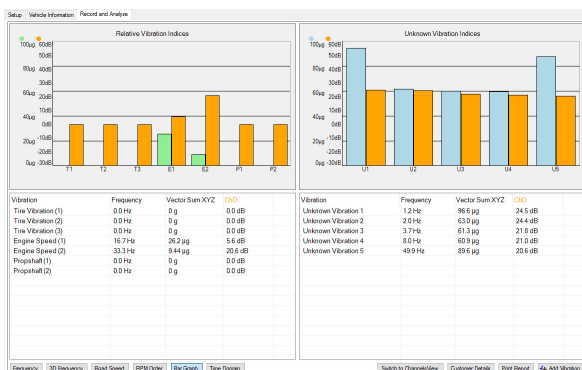
#### 3-axis (single view)



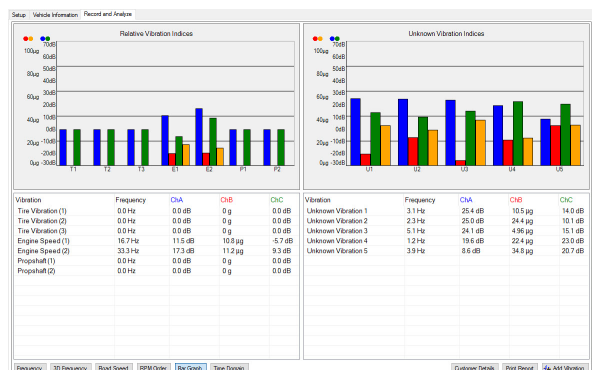
#### 3-axis plus single channel (single view)



#### 3-axis plus single channel (in default view)

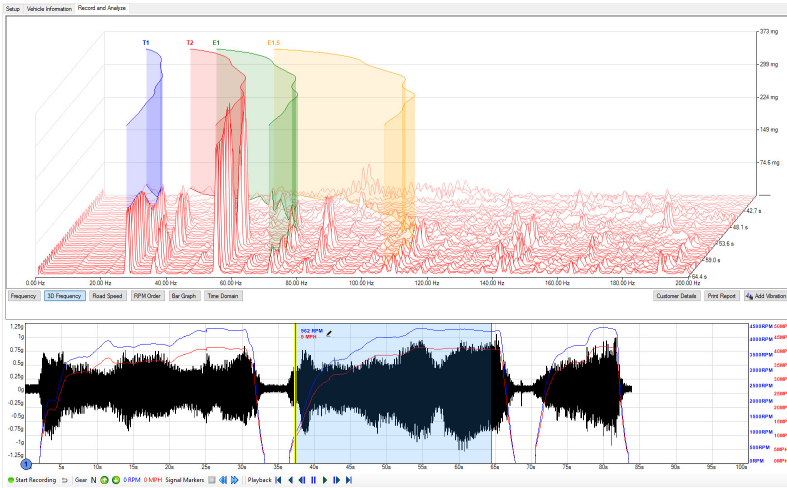


#### Multiple sensors



### 4.5.4.5 3D Frequency graph

The 3D frequency graph creates a record of how the vibration spectrum changes over time during a test drive. Selected vibrations are plotted as colored path allowing you to monitor the change in frequency of a specific vibration over time. Such a feature assists with the detection and measurement of resonance that is present for a brief moment in time when a forced vibration matches the natural frequency of a component (for instance the exhaust resonance at a specific engine RPM). The axes can be dragged to change the vertical and horizontal scales along with the viewing angles.

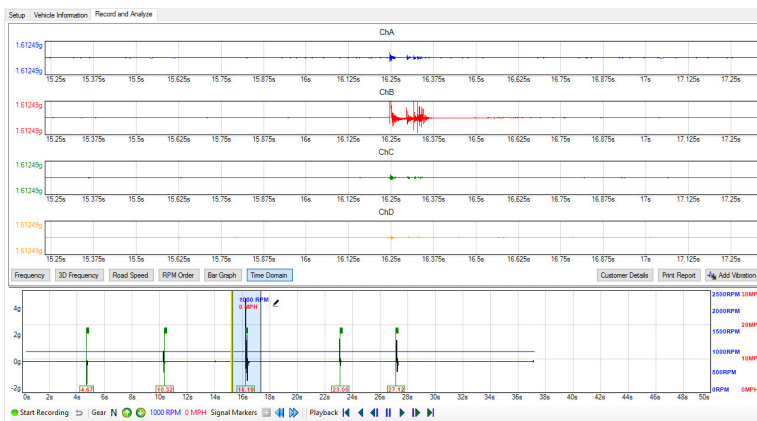


### 4.5.4.6 Time Domain

**Time Domain** is a real time feature you can use to measure harshness, such as knocks, creaks and squeaks. Noises and harshness like these are annoying but are only present for a very short period of time, with insufficient energy to be transferred to and displayed in the Frequency display (FFT) of the NVH user interface. The time domain feature will capture and display the momentary amplitude of these noises.

Events (e.g. pothole strikes) are captured in the signal history as it displays the input of the attached microphone or accelerometer live (relative to time). These events are not transferred for display in the FFT as it requires a certain amount of time with continual disturbance in order to process the event.

Until now, symptoms like these would be reserved for listening devices, letting the technician listen to the intensity of noises delivered to a headset from microphones placed around the offending area of the vehicle. The results, however, would be subjective and open to misinterpretation.

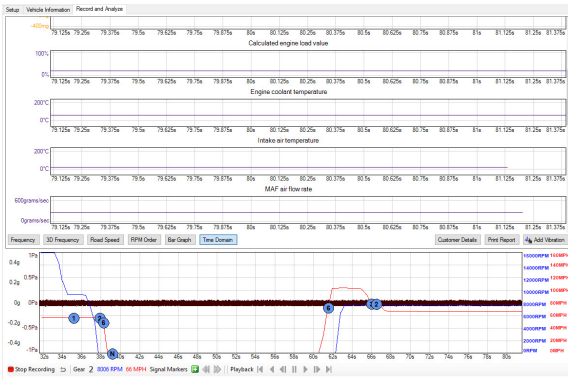


For instance:

Given the vehicle chassis is a single structure, any momentary noise is dissipated throughout the chassis where it can be detected at strategic points about the chassis by accelerometers or microphones.

The accelerometer/mic adjacent to the knock will detect the highest amplitude and the accelerometer/Mic furthest away from the knock will detect the event but at a reduced amplitude.

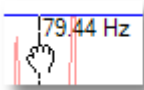
The **Time Domain** display gives the technician the ability to detect the source of a momentary knock, squeak, creak or click, despite their presence only being felt/heard for just a split second.



Left: Note that the **Time Domain** view is the only view that displays the data from capturing PIDs.

### 4.5.4.7 Graph features

#### General features



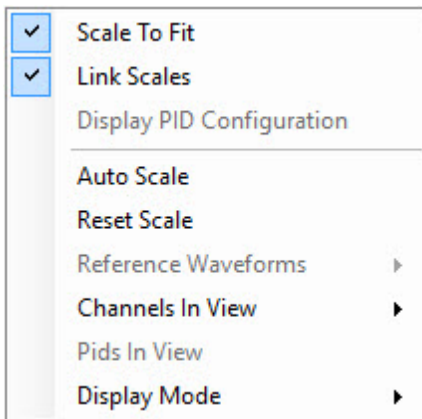
Drag left or right on the **Frequency, Road Speed or RPM Order** graphs to position the order markers. The markers are automatically positioned at the fundamental frequency and its harmonics.



Drag the vertical and frequency axis up and down to change the vertical scale.



Drag the box at the bottom of each frequency ruler to move the ruler.



Right-click on any graph to reveal the context menu:

**Scale To Fit.** Only available in Time Domain. You can use this as an auto scale, to adjust the axes to fit on screen if the signal displays outside the edges.

**Link Scales.** Only available in Time Domain. This function is to keep all of the axes proportional throughout the capture to be able to do a relative comparison.

**Display PID Configuration.** When this is enabled the PID will be displayed with the PID ID (hex) and the formula.

**Auto Scale.** This will enlarge or reduce the vertical scale to make the signal fit on the graph.

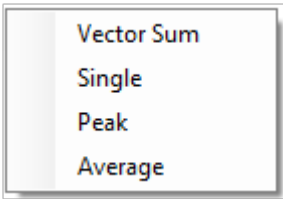
**Reset scale.** Resets the scale view to default.

**Reference Waveforms.** Available in Frequency view, use this function to add previously saved data as a reference.

**Channels In View.** Lets you display/hide individual channels of data from the scope.

**PIDs In View.** Available in Time Domain view. Lets you display/hide individual PIDs from the screen.

**Display Mode.** See below:

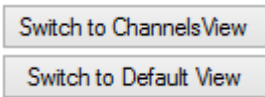


**Vector Sum.** Only available when 3-axis mode or 3-axis plus single channel has been selected. Displays the magnitude of the vector sum of all three axes.

**Single.** Displays the amplitude of each of the selected channels in View individually.

**Peak.** Shows the highest amplitude of the selected channels in View.

**Average.** Averages the amplitude of all the selected channels in View.



Only available when **3-axis** or **3-axis plus single channel** modes have been selected, these buttons switch between **Vector Sum** and **Single** display modes (see above).



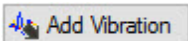
Clicking this accesses the **Details** information screen.



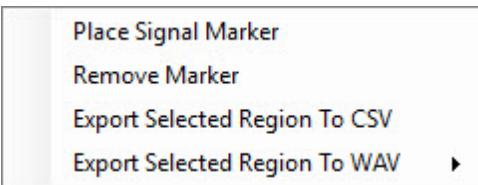
Clicking this button will preview the report ready for printing.



Click any vibration marker for more information.



Use this button to show or hide specific vibration orders on each graph.




Right-click on the recorded data in the signal history at any time to reveal the context menu:

**Place Signal Marker.** This will place a signal marker at the point the right-click was made, regardless of the time delay between the right and left mouse button clicks.


**Remove Marker.** Right-click on a previously placed signal marker to reveal the context menu. This option will remove the marker at the point the right-click was made.


**Export Selected Region To CSV.** This will save a CSV file containing all the vibration data that is currently within the selected region of recorded data.

**Export Selected Region to WAV.** This will save a WAV file containing all the audio data that is currently within the selected region of recorded data.

**Signal Markers** 

These buttons are used to:

 **Place Signal Marker.** This button is only available while recording data, and is used to add a signal marker at the currently recorded data point.

 Scroll through signal markers. These buttons are used to scroll backwards or forwards through placed signal markers. Only available once recording has been completed.

### Vibration order markers

In the various frequency graphs, vibration orders are marked with labels such as "T1" and "E2". The letter indicates the type of vibration:

- E = Engine
- T = Tires
- P = Propshaft
- U = Unknown
- AP = AC pump pulley
- A = Alternator pulley
- PS = Power steering pulley
- W = Water pump pulley

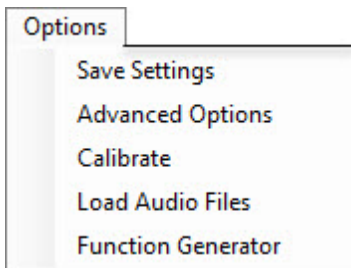
The number is the order of vibration. For example, "E2" is the second-order engine-related vibration.

Click on any marker in **PicoDiagnostics** for more information.

## 4.5.5 Options

Location: **Options** on the menu bar

Note: some of the commands shown below might not be available unless the **Enable Advanced Options** box is ticked in the [Advanced Options](#) dialog.



**Save Settings.** **PicoDiagnostics** will remember any changes you made to the program settings and use them next time you run the program.

**Advanced Options.** Opens the **Advanced Options** dialog, which controls the signal processing algorithms used by **PicoDiagnostics**.

**Calibrate.** Opens the **Calibration Wizard**. Only available for single and 3-axis mode.

**Load Audio Files.** Opens the **Load Audio** dialog for using a WAV format audio file instead of using the microphone.

**Function Generator.** Opens the **Function Generator** dialog.

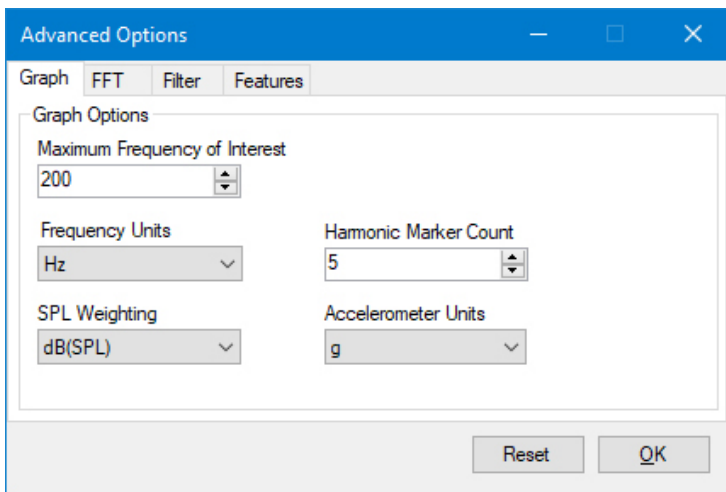


## 4.5.6 Advanced options

Location: **Options** on menu bar, then **Advanced Options**.

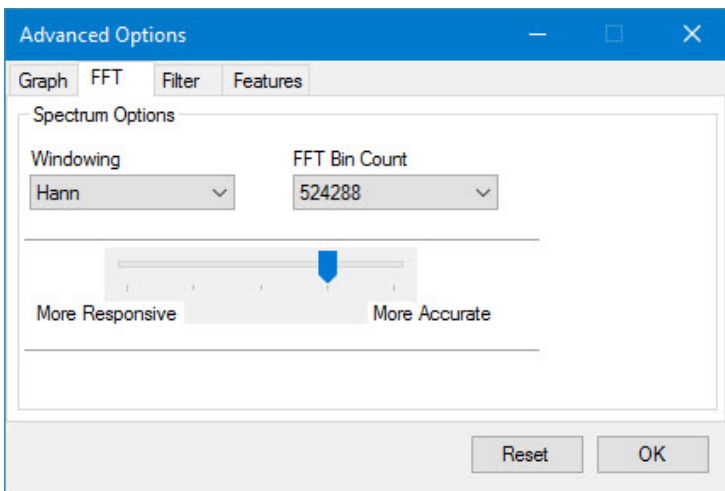
The tabs contains various options related to frequency spectrum calculations. While these are detailed below, we suggest you do not adjust them (unless recommended to do so by your Technical Support department).

### 4.5.6.1 Graph



<b>Maximum frequency of interest</b>	Maximum frequency that will be displayed with the FFT views.
<b>Frequency Units</b>	Adjusts the unit of measure along the X axis in the FFT views (RPM/Hz/CPM).
<b>SPL Weighting</b>	Allows you to adjust the weighting for Sound pressure level (SPL). The available options are: <b>dB(A)</b> , <b>dB(B)</b> , <b>dB(C)</b> , and <b>dB(SPL)</b> .
<b>Harmonic Marker Count</b>	Lets you choose the number of harmonic markers to use on the capture.
<b>Accelerometer units</b>	Lets you choose the scale. The dBg is a logarithmic scale, g is a linear scale and m/s <sup>2</sup> for SI acceleration units.

### 4.5.6.2 FFT



#### Windowing

Lets you select one of the standard window functions for spectrum analysis. The available options are: **Hann**, **Rectangular**, and **Flat-top**.

#### FFT Bin Count

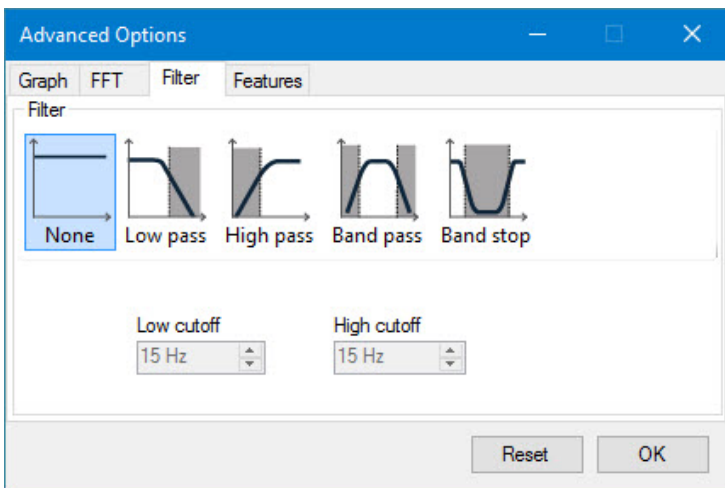
Adjust points of FFT sacrificing processing time.

#### Responsiveness

Allows you to adjust the length of the scan time. Reducing the scan time reduces resolution of frequency in the FFT.

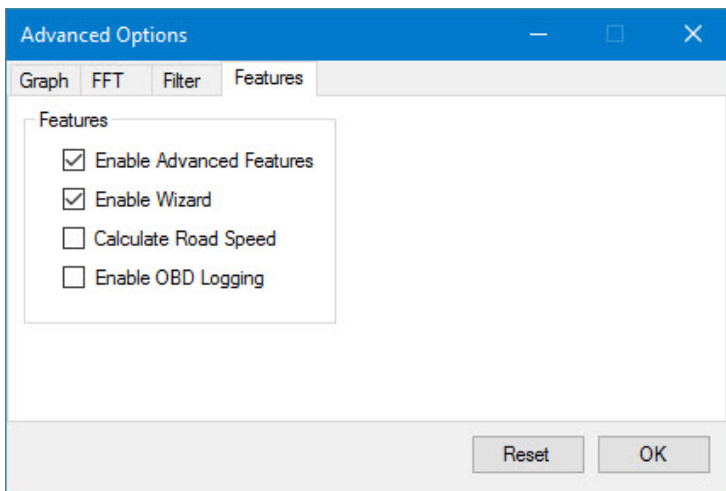
### 4.5.6.3 Filter

Note: Filtering occurs post-capture and has no effect on the recording of live data.



<b>Low pass</b>	Allows any frequency below the set threshold to be detected.
<b>High pass</b>	Allows any frequency above the set threshold to be detected.
<b>Band Pass</b>	When enabled allows frequencies between the low pass and high pass range to be detected.
<b>Band Stop</b>	When enabled allows frequencies outside of the low pass and high pass range to be detected.

#### 4.5.6.4 Features



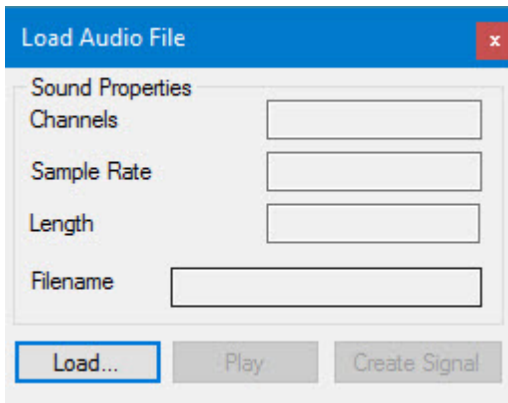
<b>Enable Advanced Features</b>	Some commands under the main <b>Options</b> menu are hidden unless this box is ticked.
<b>Enable Wizard</b>	By default this option is enabled. To stop the NVH Wizard from appearing uncheck this box.
<b>Calculate Road Speed</b>	Enable this to calculate the road speed through the gear ratios in order to derive the tire and propshaft vibrations. This can be used instead of gaining the vehicle speed via the OBD port. Note: If a square wave/tach is used for RPM signal, this option is on by default.
<b>Enable OBD Logging</b>	Adds additional information to the trace file (for Technical Support).

#### 4.5.7 Load audio dialog

Location: **Options** > **Load Audio File** on the menu bar

This dialog is only available when the **Enable Advanced Options** box is ticked in the [Advanced Options](#) dialog.

By using this dialog you can analyze previously recorded audio, for example of vehicle noise recorded by a customer. The file must be in WAV format.



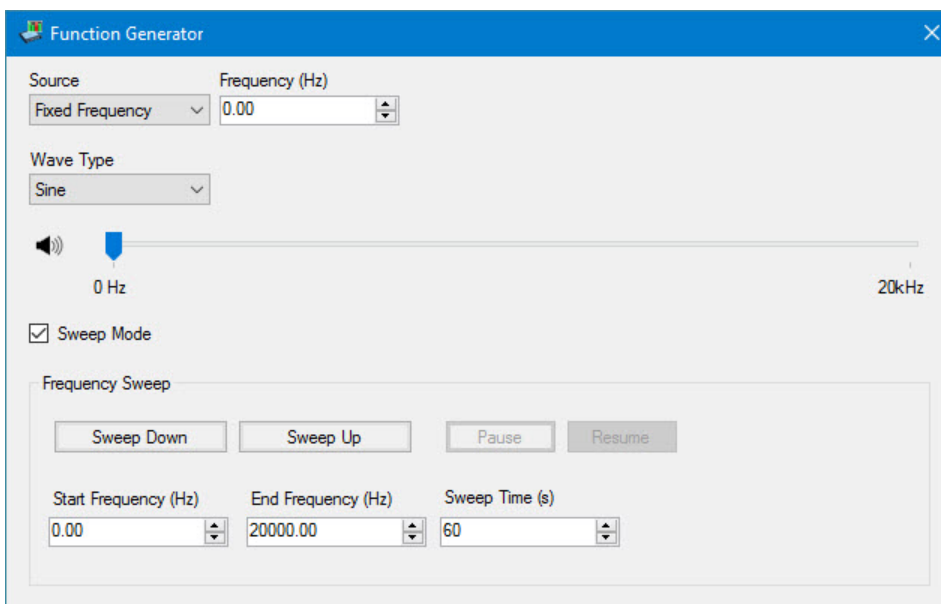
1. Click **Load** and locate the audio file.
2. Verify that the **Sound Properties** are correctly shown.
3. If desired, click **Play** to listen to the file.
4. To convert the file for vibration analysis in **PicoDiagnostics**, click **Create Signal**.

## 4.5.8 Function generator

The inbuilt **Function Generator** can generate sounds by using your laptop to stimulate resonance, causing an object to vibrate with a greater amplitude at its specific natural frequency. This means that the technicians can listen to audio played back at specific frequencies and match it to sounds present in the vehicle.

The feature can be manipulated to play back audio through the vehicle's In Car Entertainment system (ICE) via the PC headphone socket, streamed from the PC via Bluetooth, or FM modulator if the vehicle does not have Aux or Bluetooth.

This is a very useful feature when customers complain about interior rattles. They will often have difficulty describing the sound or pinpointing the origin. If you playback variable low frequencies via the ICE with the **Function Generator**, and increase the volume, you can generate rattles inside the cabin that can be confirmed by the customer and help the technician find the origin. All safely done in a parked car.



<b>Source</b>	<p>There are several different sources to choose between: <b>Fixed frequency, T1, T2, T3, E1, E2, P1 and P2</b></p> <p>You can output fixed frequencies through the speakers and compare them to the vibrations heard during a road test, or you can select other frequency sources to output to a strobe light (third-party hardware) to identify faulty components.</p>
<b>Frequency</b>	Frequency to use when creating the playback sound. Use the arrow buttons to adjust it up or down.
<b>Wave Type</b>	Sine wave is used to replicate frequency vibrations through the speakers. Square wave is used for controlling a strobe light function.
<b>Hz bar</b>	You can also adjust the frequency by dragging the blue button right or left on the bar. This is useful if you do not know frequency, as you can drag this back and forth while playing the sound to hear the difference and use for matching.
<b>Mute button</b>	Click the loudspeaker icon next to the Hz bar to toggle the sound on and off.
<b>Sweep Mode</b>	Enable sweep mode. In sweep mode you can sweep up or down between the start frequency and the end frequency at a specified sweep time.
<b>Sweep Down</b>	Makes the function generator sweep from the high frequency to the low frequency.
<b>Sweep Up</b>	Makes the function generator sweep from the low frequency to the high frequency.
<b>Pause</b>	Temporarily stops the sweep.
<b>Resume</b>	Starts the sweep again from where you paused it.
<b>Start Frequency</b>	The lowest frequency you want to sweep to/from
<b>End Frequency</b>	The highest frequency you want to sweep to/from
<b>Sweep Time</b>	The time you want to do the sweep in.



# Index

## 3

- 3-axis 36
- 3-axis plus single channel 36
- 3D frequency graph 47

## A

- Access 7
- Add vibration 49

## B

- Bar graph 46
- Battery test 24, 26, 28
  - Connections 25
  - Options 27
  - Results 29

## C

- Calculate Road Speed 53
- Compression test 19, 20, 22
  - Conditions 19
  - Connections 20
  - Failed 23
  - Options 21
- Configure PIDs 39
- Copyright 7
- Cylinder balance 14
  - controls 15
  - Failed 18
  - Options 14
- Cylinder variation 15

## D

- Details dialog 12
- Display mode 49
- Display PIDs data 48

## E

- Enable Advanced Features 53
- Enable OBD Logging 53
- Exit command 10
- Export 49

## F

- Filter options 53
- Fitness for purpose 7
- Frequency graph 43
- Function generator 56

## H

- Help menu 13

## L

- Legal statement 7
- Liability 7
- Licence agreement 7
- Load Audio dialog 55
- Load command 10

## M

- Menu bar 10
- Misfires 15
- Mission-critical applications 7
- Multiple sensors 36

## N

- Notes form 12
- NVH advanced options 53
- NVH graph features 49
- NVH options 52
- NVH results viewer 42

## P

- PIDs 39
- PIDs in view 49
- Preferences command 10
- Print report 49
- Propshaft Balancing 31

## R

- Record and analyze 42
- Road speed graph 45
- RPM order graph 44
- RPM signal 36

## S

- Save command 10
- Scan tool 36

Signal graph 17  
Signal markers 49  
Signal options 39  
Signal quality check 36  
Single channel 36  
Square wave 36  
Static RPM 36  
Support 7

## T

Tach 36  
Tests menu 12  
Time Domain 48  
Trademarks 7

## U

Upgrades 7  
Usage 7  
User details 11

## V

Vehicle details form 12  
Vehicle information 39  
Vibration order markers 49  
Vibration signal 36  
View menu 11  
Viewing the result 42  
Viruses 7





**United Kingdom global headquarters**  
Pico Technology  
James House  
Colmworth Business Park  
St. Neots  
Cambridgeshire  
PE19 8YP  
United Kingdom

Tel: +44 (0) 1480 396 395

[sales@picotech.com](mailto:sales@picotech.com)  
[support@picotech.com](mailto:support@picotech.com)

[www.picoauto.com](http://www.picoauto.com)

**North America regional office:**  
Pico Technology  
320 N Glenwood Blvd  
Tyler  
TX 75702  
United States

Tel: +1 800 591 2796

[sales@picotech.com](mailto:sales@picotech.com)  
[support@picotech.com](mailto:support@picotech.com)

**Asia-Pacific head office:**

Pico Technology  
Room 2252, 22/F, Centro  
568 Hengfeng Road  
Zhabei District  
Shanghai 200070  
PR China

Tel: +86 21 2226-5152

[pico.asia-pacific@picotech.com](mailto:pico.asia-pacific@picotech.com)