

Mercedes-Benz B2B Connect

System Update – 25 March 2024

Mercedes-Benz



B2B Connect Update - 25 March 2024

Key Updates

[New Parts View layout](#)

Relevant parts are visible along the bottom of the screen once a part has been selected.

[Navigation from Shopping Cart to Parts List](#)

Further information about parts in the basket is available by clicking on the part number.

[Parts drawing in subgroups](#)

A preview of the parts drawing will now be visible in the subgroup category list.

[Filters in Parts Catalogue](#)

Similar to WebParts, the filters are now included when searching for parts.

[Select or deselect all Items within basket](#)

There are now further options for how to select and deselect items within the basket.

[Order reference number in overview](#)

Custom order numbers/references are now available to create and view.

[Delivery & pick up timelines](#)

Customers can now see their linked Retailers timelines for delivery and pick up orders when you checkout.

New Parts View

Additional parts which may be of interest are now shown along the bottom and the side of the screen in a sliding reel which can be toggled between.

This can also be navigated using the arrow keys on the keyboard.

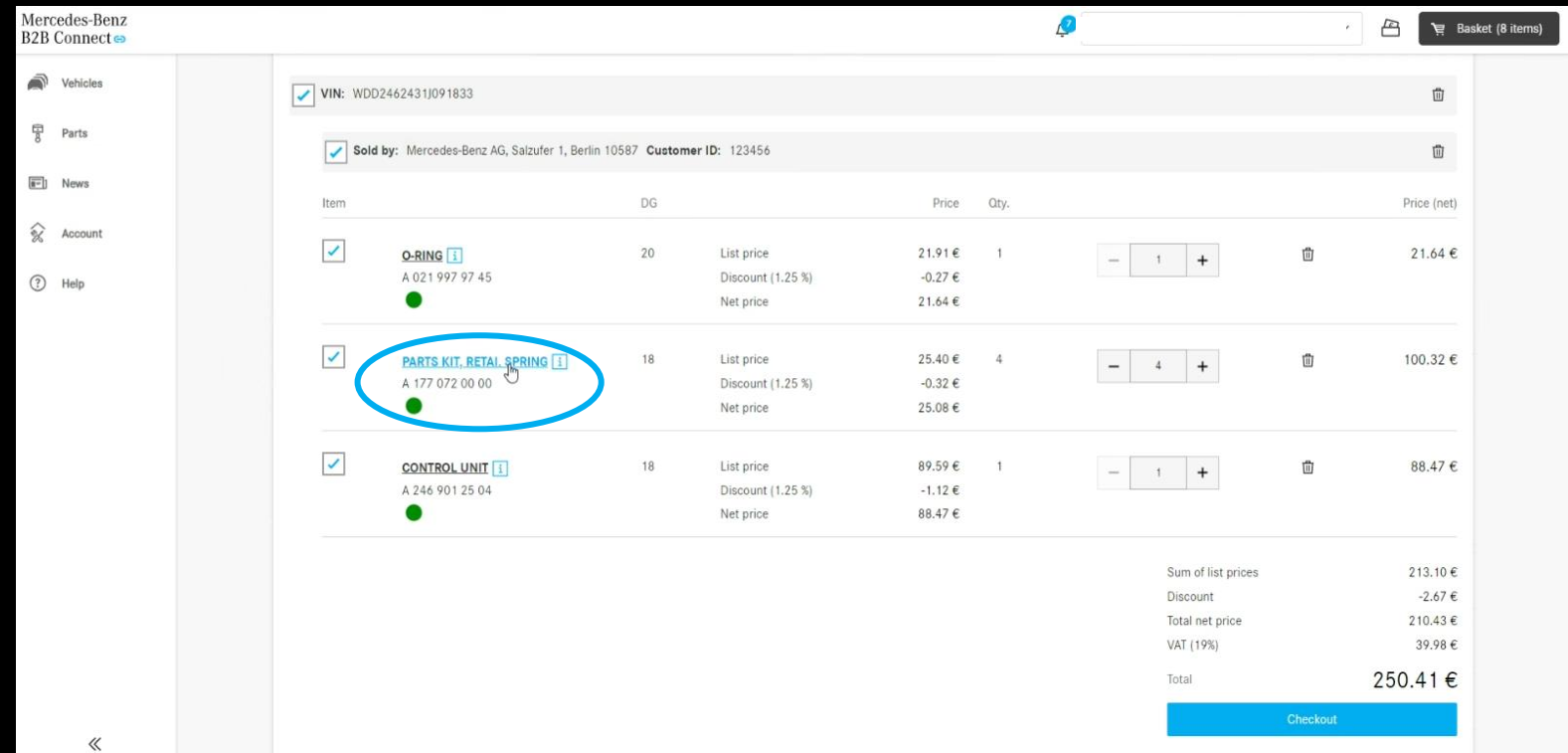
The screenshot displays the Mercedes-Benz B2B Connect parts view interface. The main area shows a vehicle diagram with parts highlighted. A sliding reel at the bottom displays additional parts, and navigation arrows are visible on the left and right sides of the diagram.

Pos.	Part number	Information	NP/LP (€)	Qty.	Reset highlights
50	A 246 905 22 01	SWITCH BLOCK Upper control panel Color selection Footnote Code: (80...	-	1	<input type="radio"/>
80	A 001 984 55 29	HEXALOBULAR BOLT Upper control panel mount; M4X10	0.71 0.72	4	<input checked="" type="radio"/>
100	A 246 900 12 09	CONTROL UNIT, COMPLETE AUDIO/COMAND CONTROL PANEL View replacements Color selection Footnote Code: 802	-	1	<input type="radio"/>

Open parts information from the basket

Parts within the basket can now be opened by clicking on the part number link in the basket.

This will then display the pricing and parts drawing.



The screenshot shows the Mercedes-Benz B2B Connect interface. The left sidebar contains navigation options: Vehicles, Parts, News, Account, and Help. The main content area displays a basket with 8 items. The top section shows the VIN: WDD2462431J091833 and the seller: Mercedes-Benz AG, Salzufer 1, Berlin 10587, with Customer ID: 123456. Below this is a table of items:

Item	DG	Price	Qty.	Price (net)
<input checked="" type="checkbox"/> O-RING A 021 997 97 45	20	List price: 21.91 € Discount (1.25 %): -0.27 € Net price: 21.64 €	1	21.64 €
<input checked="" type="checkbox"/> PARTS KIT, RETAL SPRING A 177 072 00 00	18	List price: 25.40 € Discount (1.25 %): -0.32 € Net price: 25.08 €	4	100.32 €
<input checked="" type="checkbox"/> CONTROL UNIT A 246 901 25 04	18	List price: 89.59 € Discount (1.25 %): -1.12 € Net price: 88.47 €	1	88.47 €

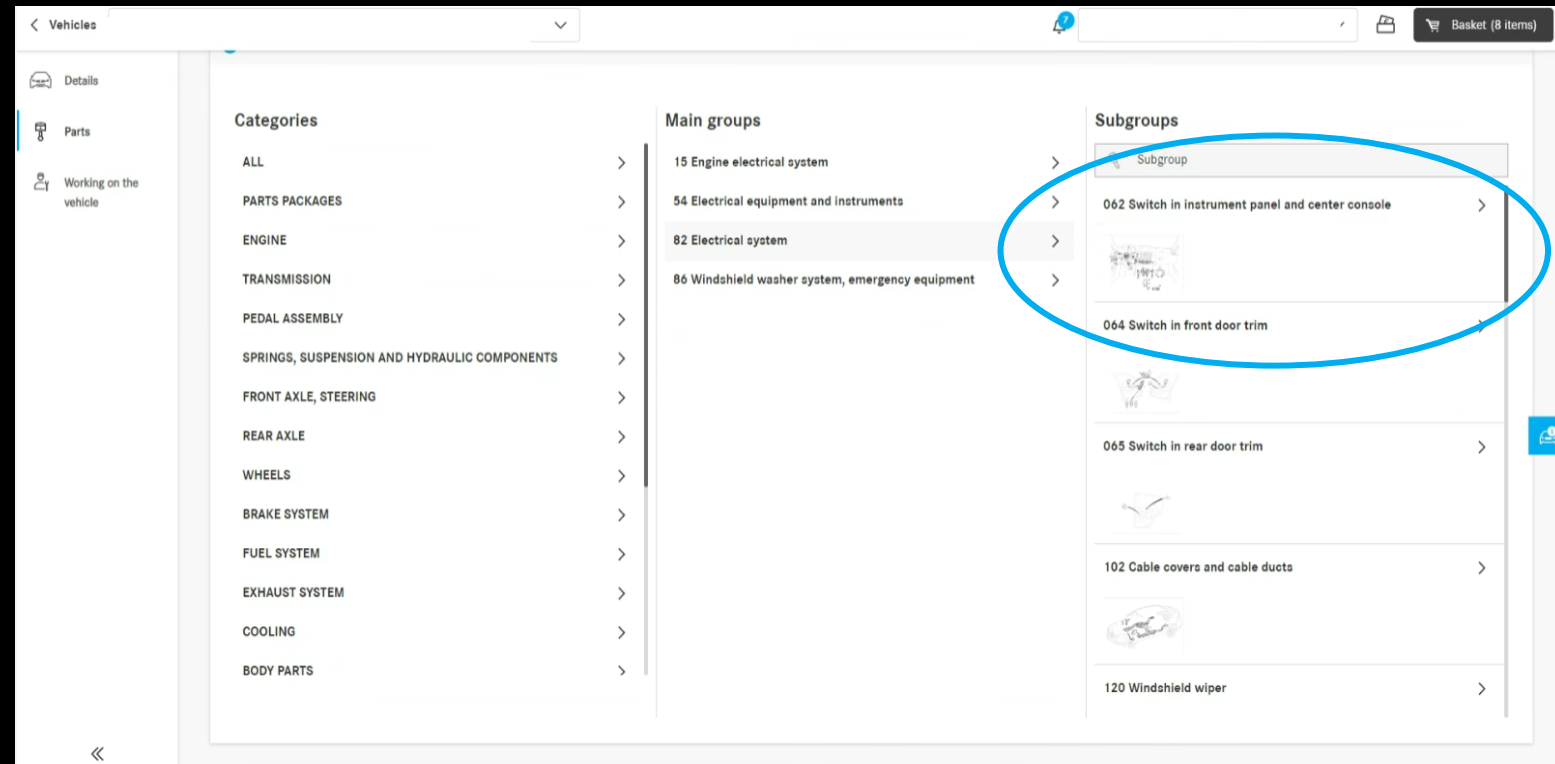
The 'PARTS KIT, RETAL SPRING' part number link is circled in blue. At the bottom right, a summary table shows the total price:

Sum of list prices	213.10 €
Discount	-2.67 €
Total net price	210.43 €
VAT (19%)	39.98 €
Total	250.41 €

A blue 'Checkout' button is located at the bottom right of the basket.

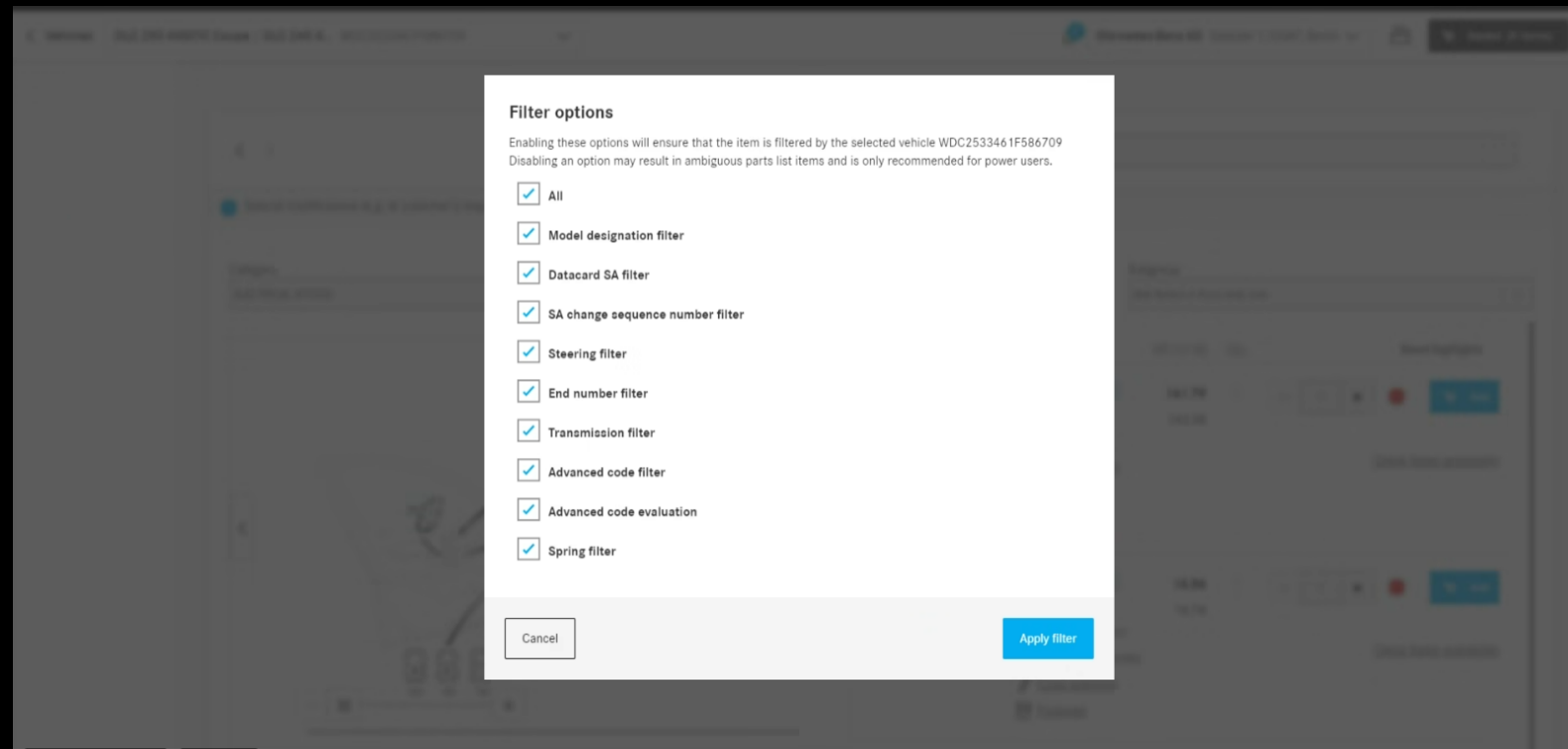
Parts Drawings Preview in Subgroup Lists

To make it easier to find the parts they are looking for, a small image preview is visible in the subgroup parts list.



Print Vehicle Data Card

The filter options have now been embedded into the parts list, which can be selected and deselected while searching for parts.



Select or deselect all parts in the shopping basket

The full cart can be selected or deselected by using the checkboxes. Only items that are selected will be processed when once at checkout.

If the basket contains a combination of parts that are selected, and deselected, a “-” symbol will appear in the checkbox for that vehicle/dealer site.

Mercedes-Benz B2B Connect

VIN: A 021 997 97 45

Sold by: Customer

Item	DG	Price	Qty.	Price (net)
<input type="checkbox"/> O-RING [1] A 021 997 97 45	29	List price: 21.91 € Discount (1.25 %): -0.27 € Net price: 21.64 €	1	21.64 €
<input checked="" type="checkbox"/> PARTS KIT, RETAL, SPRING [1] A 177 072 00 00	18	List price: 25.40 € Discount (1.25 %): -0.32 € Net price: 25.08 €	4	100.32 €
<input checked="" type="checkbox"/> CONTROL UNIT [1] A 248 901 25 04	18	List price: 89.59 € Discount (1.25 %): -1.12 € Net price: 88.47 €	1	88.47 €

Sum of list prices: 191.19 €
Discount: -2.40 €
Total net price: 188.79 €
VAT (1.9%): 35.87 €
Total: 224.66 €

Checkout

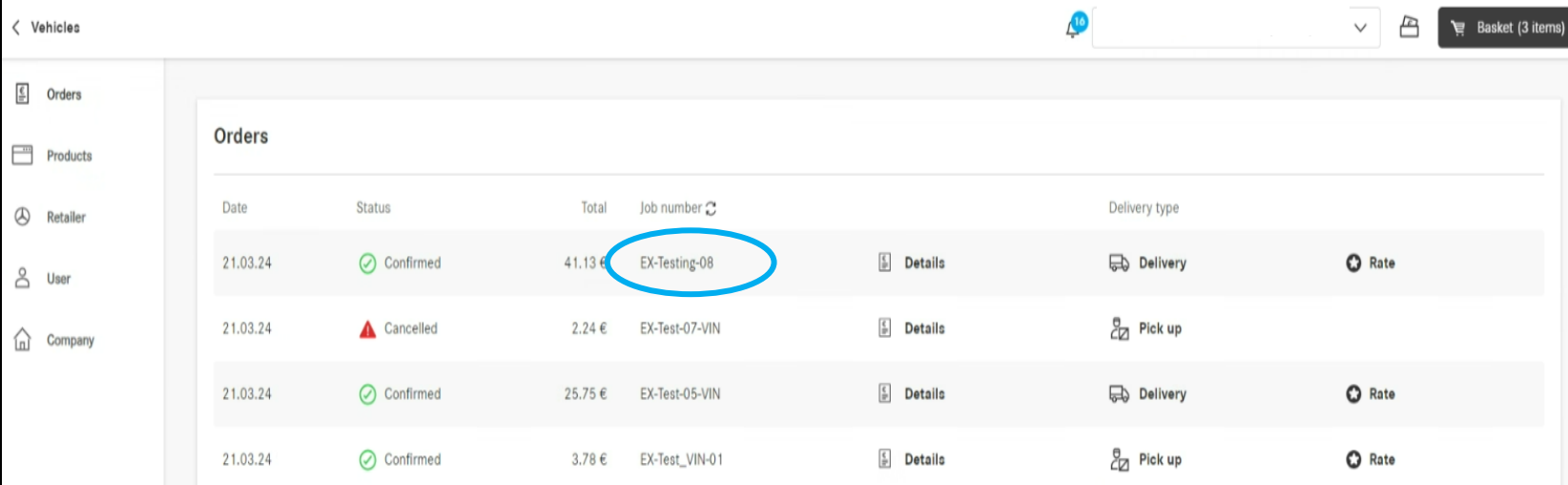
VIN: A 042 033 22 01 50

Sold by: Customer ID:

Item	DG	Price	Qty.	Price (net)
<input checked="" type="checkbox"/> MAIN BEARING, UPPER HALF [1] A 042 033 22 01 50 Check faster availability	18	List price: 13.04 € Discount (1.25 %): -0.16 € Net price: 12.88 €	1	12.88 €

Order number/reference is now visible in order history

In the order history, the order number/reference entered during the basket checkout is displayed.



Date	Status	Total	Job number ↻		Delivery type	
21.03.24	Confirmed	41.13 €	EX-Testing-08	Details	Delivery	Rate
21.03.24	Cancelled	2.24 €	EX-Test-07-VIN	Details	Pick up	
21.03.24	Confirmed	25.75 €	EX-Test-05-VIN	Details	Delivery	Rate
21.03.24	Confirmed	3.78 €	EX-Test_VIN-01	Details	Pick up	Rate

Timelines for delivery and pick-up slots

Delivery and pick-up time slots are now displayed during checkout. This is based upon the availability of the parts ordered.

The information is based upon any the data that has been input by the selected dealer.

Vehicle list

3

Basket (X items)

< Back

Please check your summary

Ordering for

Customer ID	CF-0005
Company	ITS Partner Example
Street/Nr.	Examplestreet 123
Postcode/Town	12345 Town
Country	Lalaland

Delivery address

Customer ID	CF-0005
Company	ITS Partner Example
Street/Nr.	Examplestreet 123
Postcode/Town	12345 Town
Country	Lalaland

Item(s) sold and delivered by Mercedes-Benz AG. The following conditions apply: [Terms of use for Mercedes-Benz B2B Connect, WebParts, After-Sales Applications and Data Content](#), [Terms & Conditions of Autoteile Meyer & Söhne GmbH](#) and the [declaration of use](#). Here you will find our [privacy statement](#).

Retailer: Maxmechanik GbR, Quickbornstraße 25, 12345 Hamburg

Delivery type

Collection Delivery

Delivery: Tuesday 10.02.2024 14:00 - 16:00 for orders received by Monday 12:00.

Order type

Immediate requirement Stock order

Prices may vary depending on selected order type.

VIN